

Nevada Economic Outlook

Presented to

The Commission for Persons Who are Deaf or Hard of Hearing

November 10th, 2020

Elisa Cafferata, Director

Jenny Casselman, Deputy Director

David Schmidt, Chief Economist

Christopher Robison, Economist



NevadaWorkforce.com

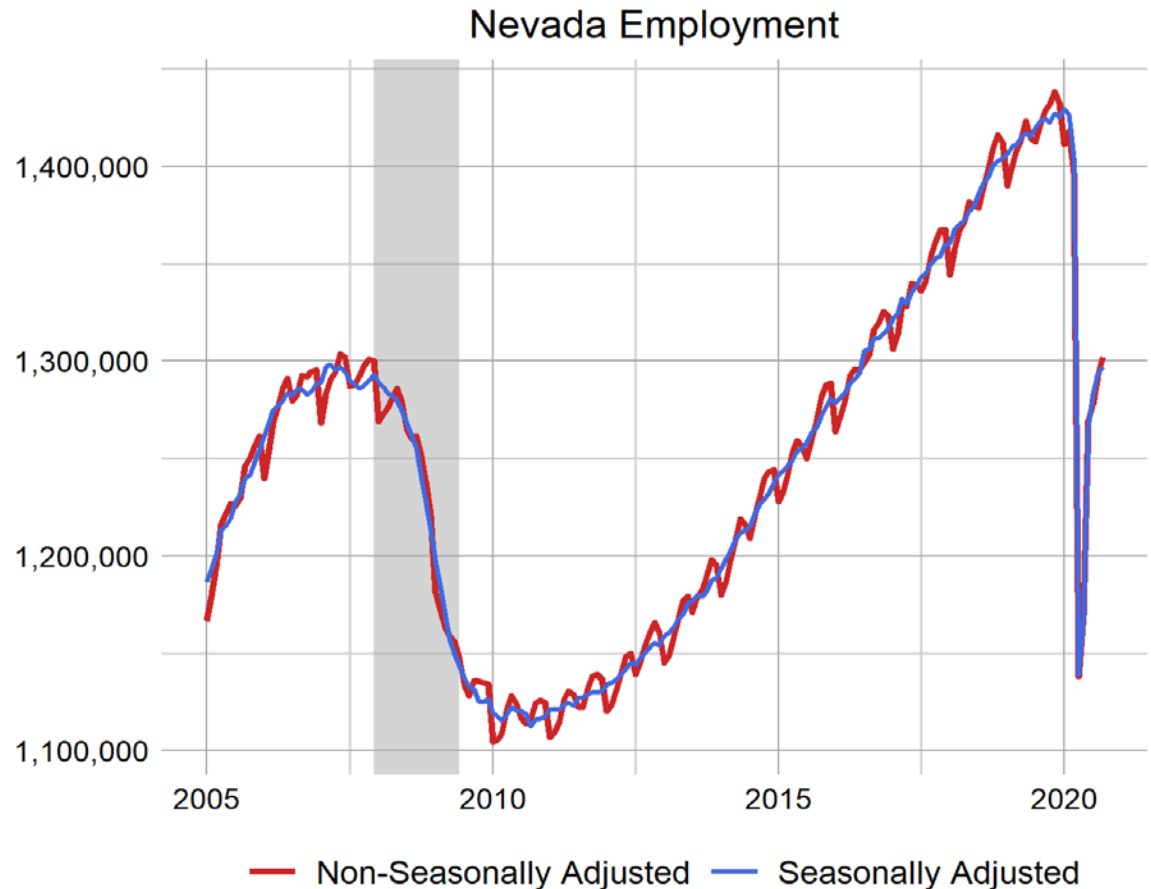
 @NVLaborMarket



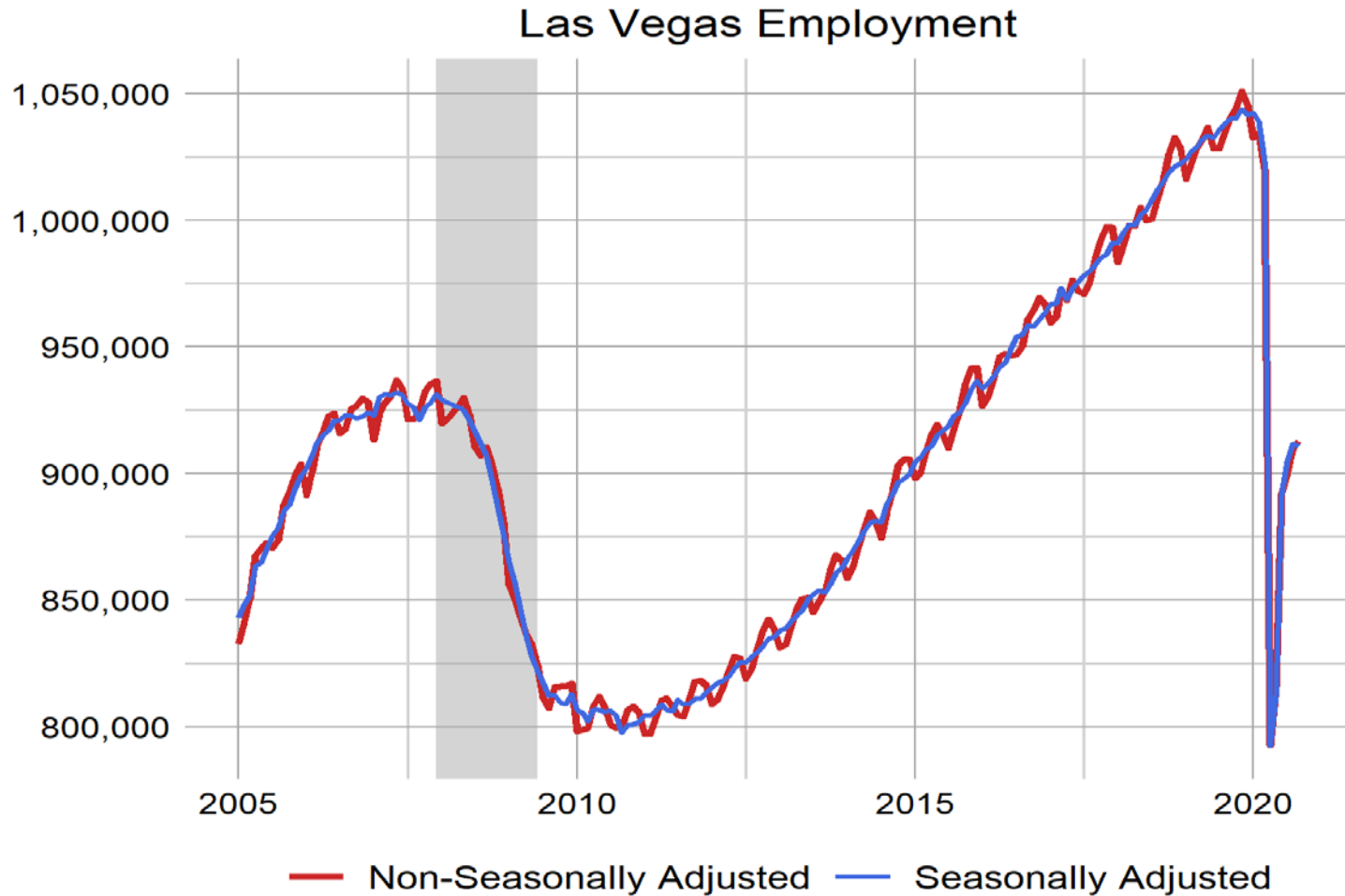
Employment

Employment in Nevada plunged following the state closure of nonessential businesses, but rebounded quickly as those closures were lifted.

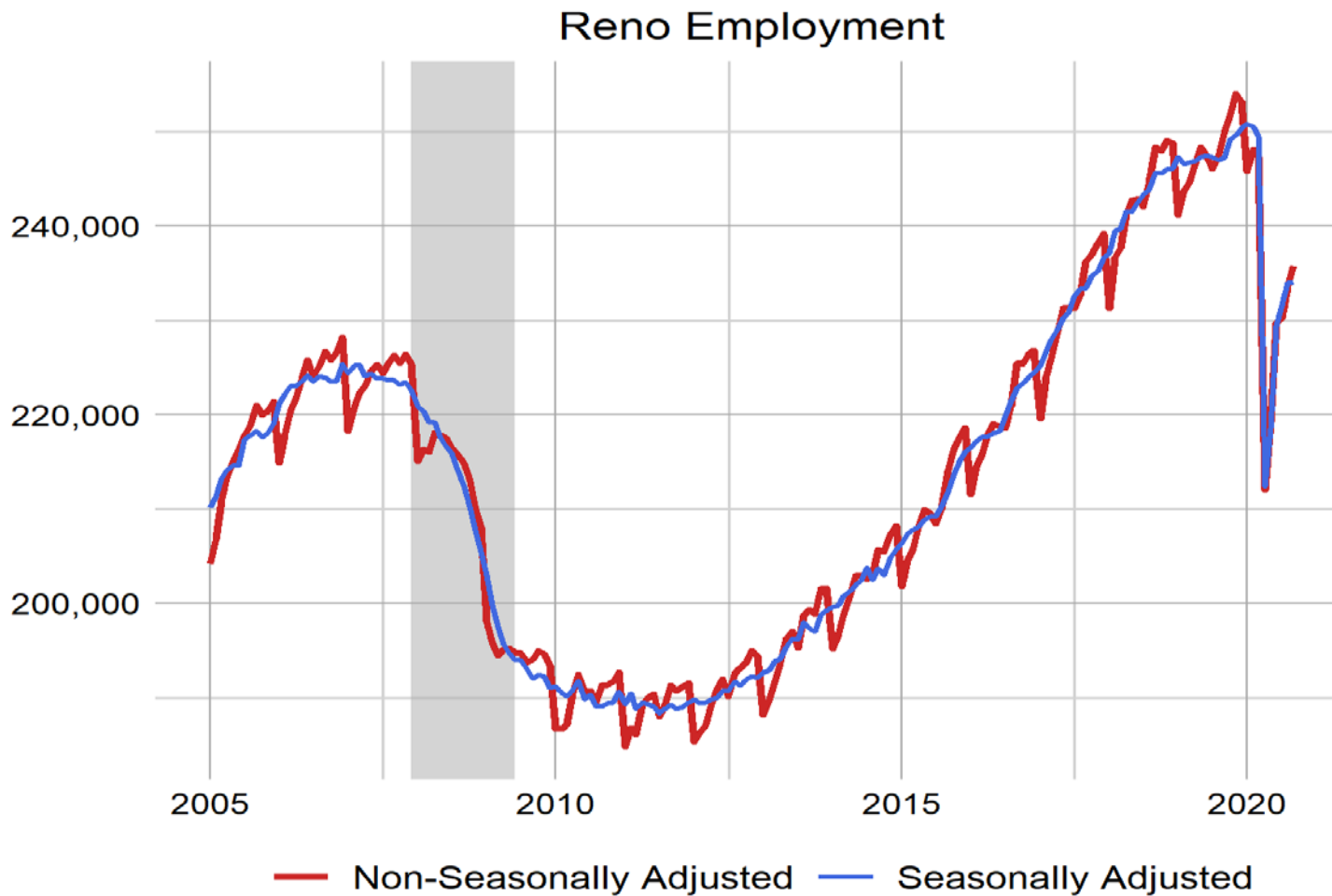
In recent months, the pace of rebound has slowed as there have been fewer major restrictions lifted in recent months.



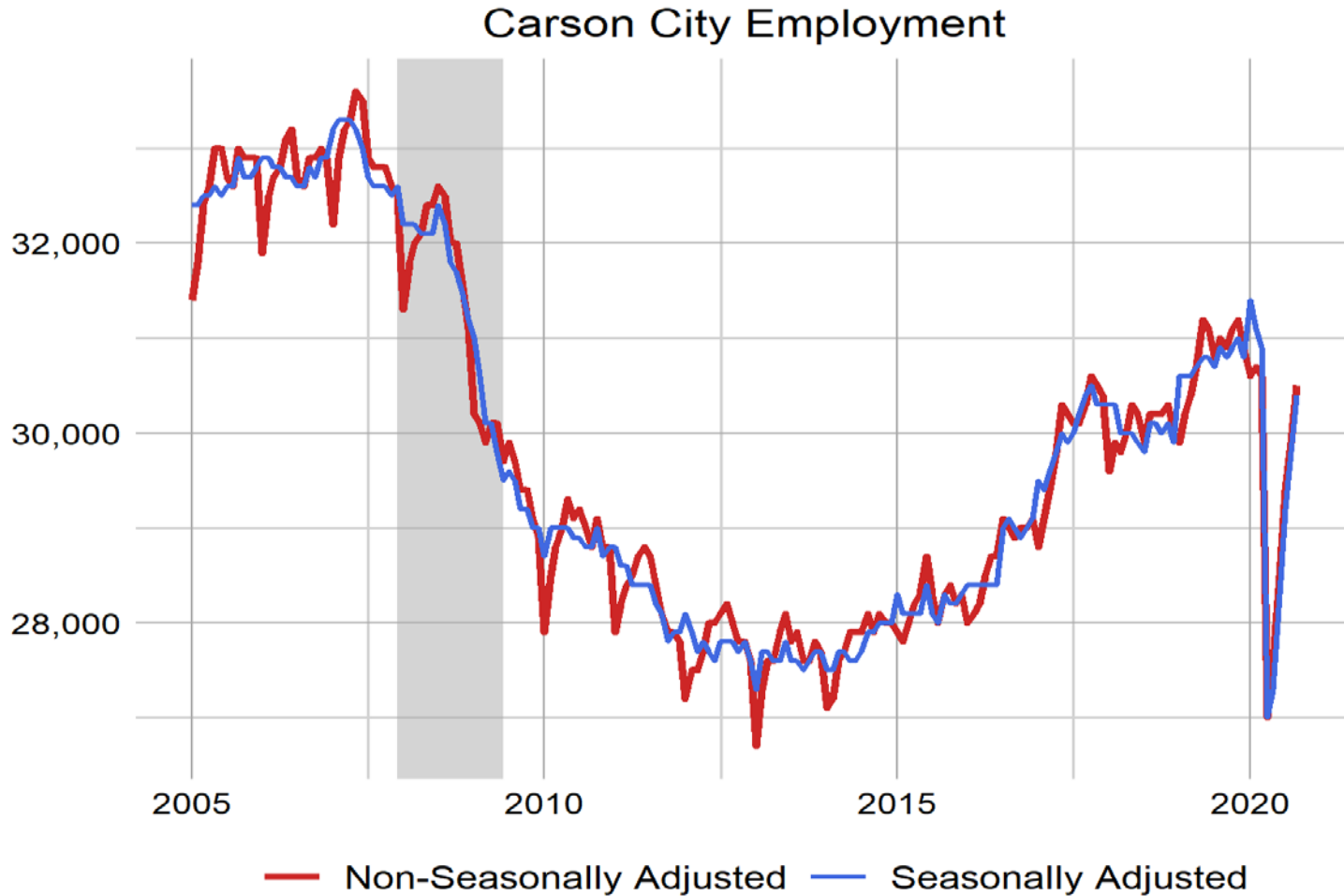
Employment - Las Vegas



Employment - Reno



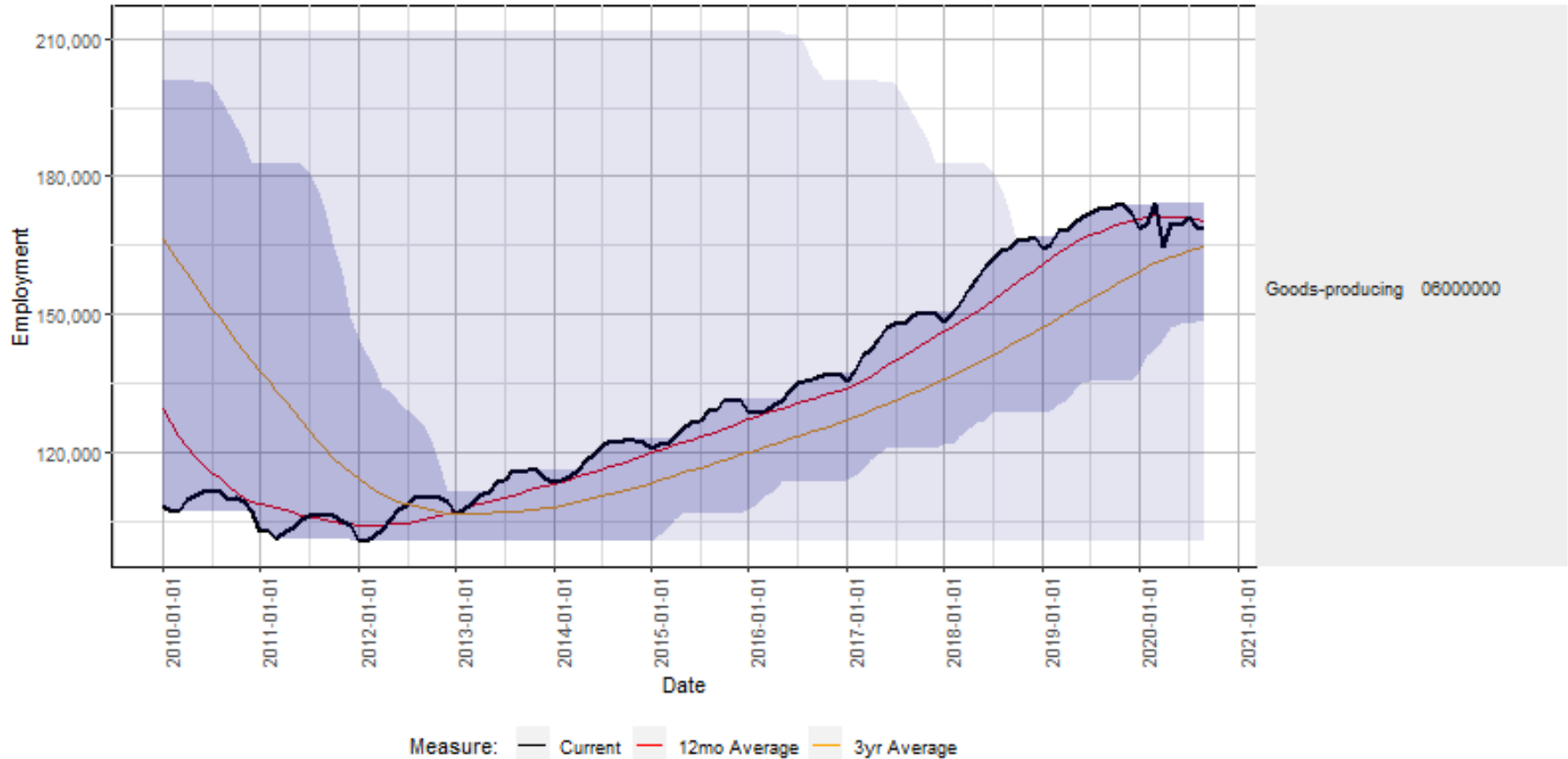
Employment - Carson City



Industry Employment: Goods-Producing

Nevada Employment Estimates from CES Program

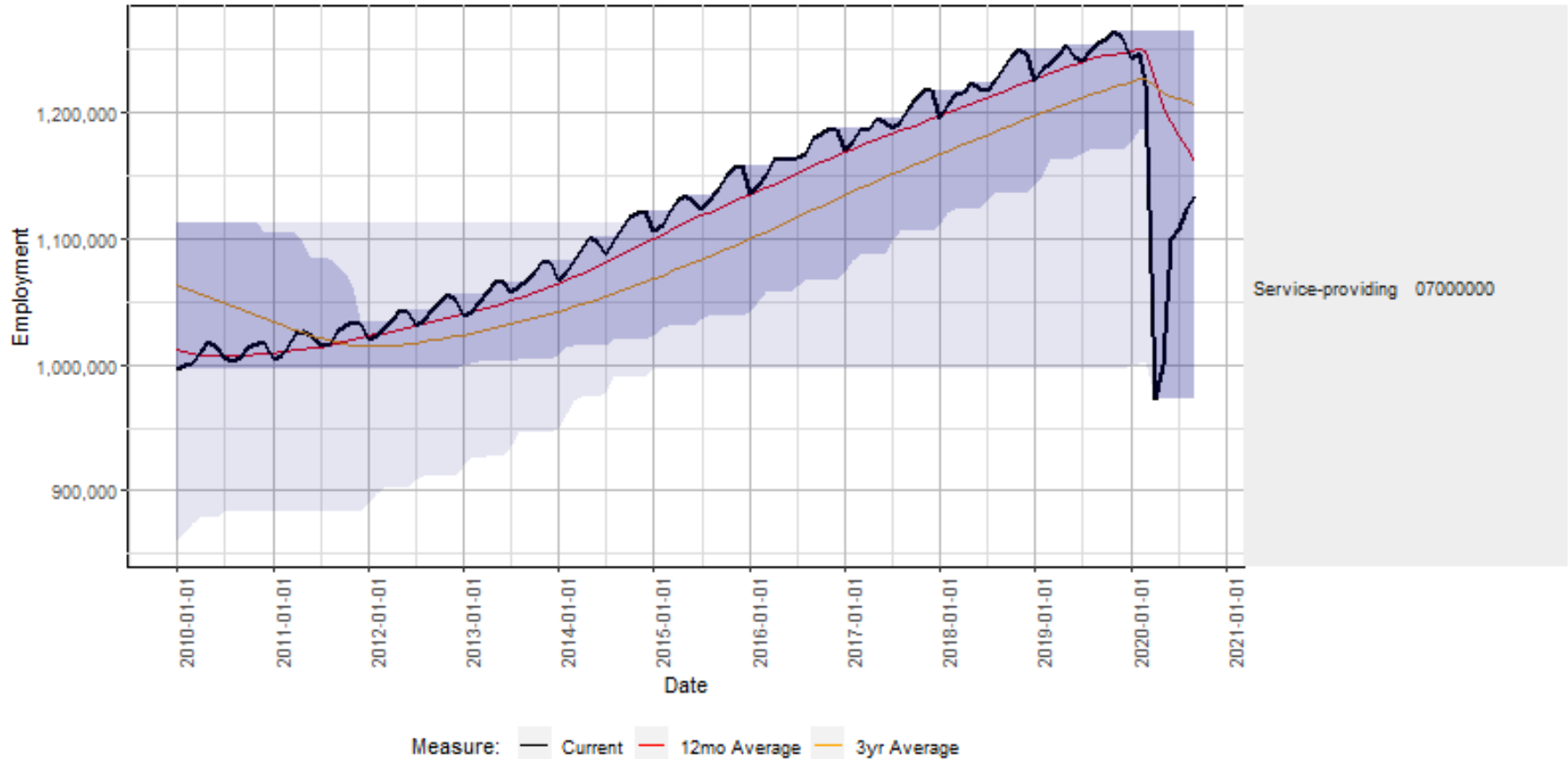
Dark shading indicates 3-year extreme values,
Light shading indicates 10-year extreme values
Data series have not been seasonally adjusted



Industry Employment: Service-Providing

Nevada Employment Estimates from CES Program

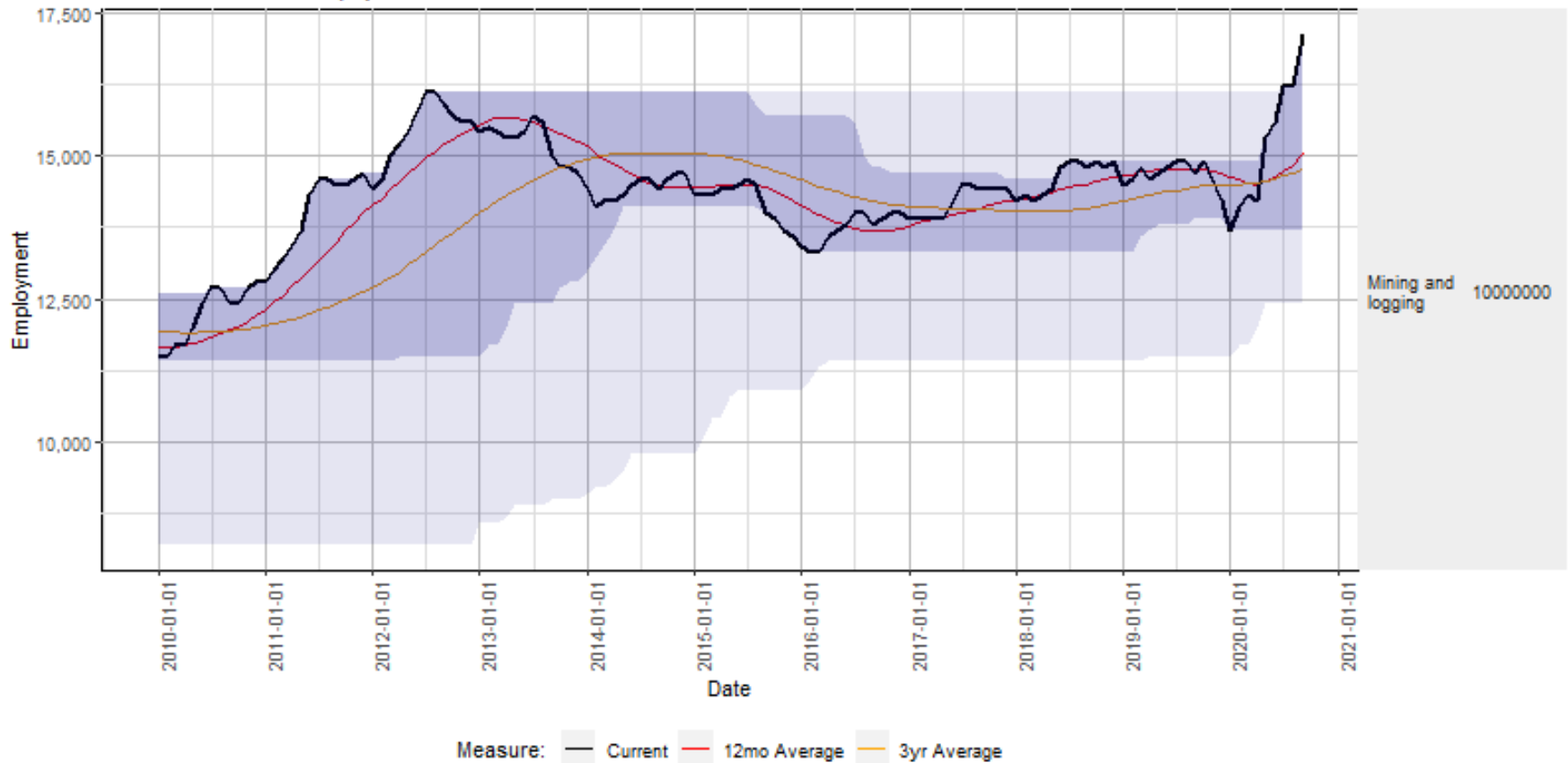
Dark shading indicates 3-year extreme values,
Light shading indicates 10-year extreme values
Data series have not been seasonally adjusted



Industry Employment: Mining

Nevada Employment Estimates from CES Program

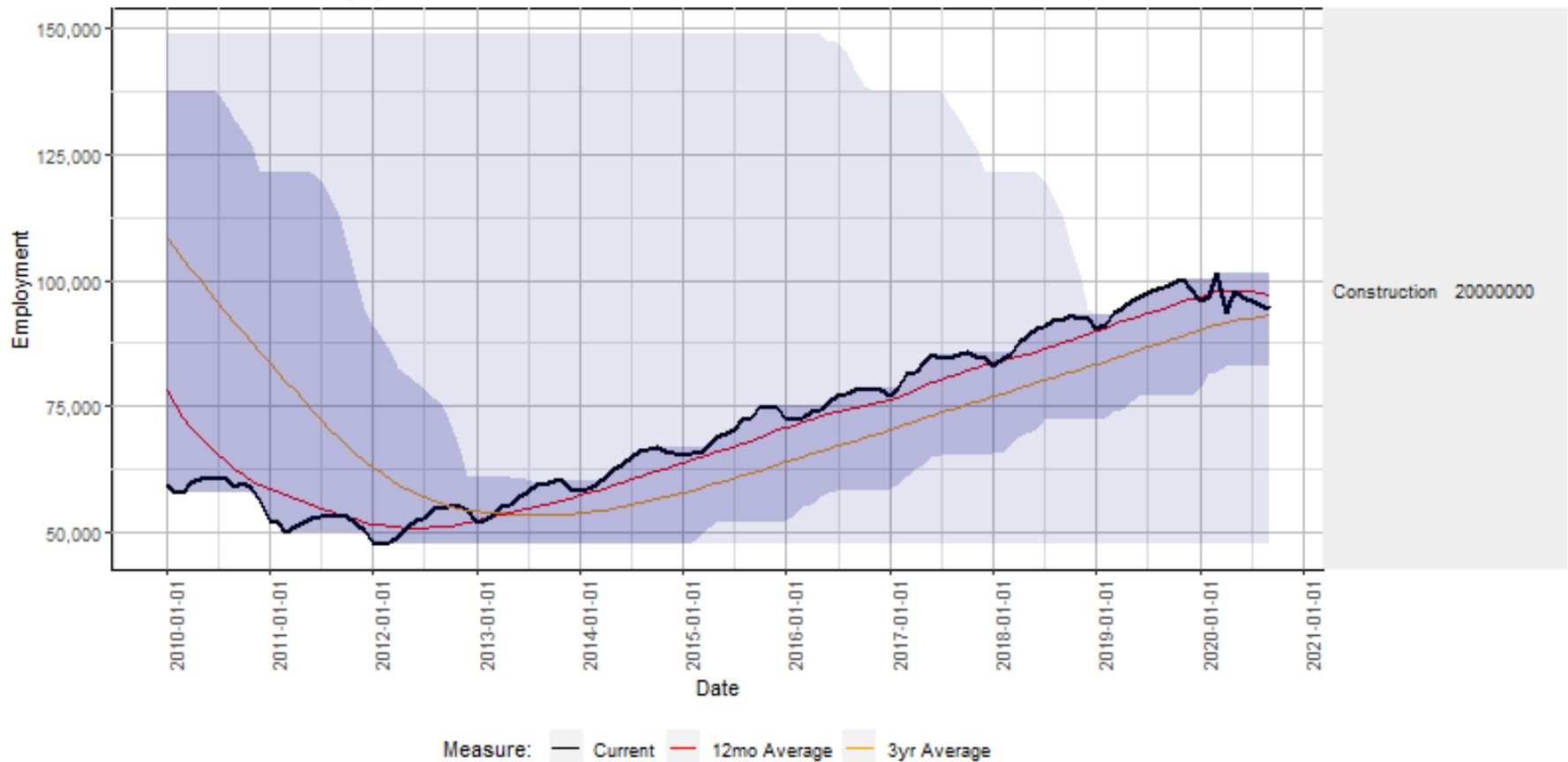
Dark shading indicates 3-year extreme values,
Light shading indicates 10-year extreme values
Data series have not been seasonally adjusted



Industry Employment: Construction

Nevada Employment Estimates from CES Program

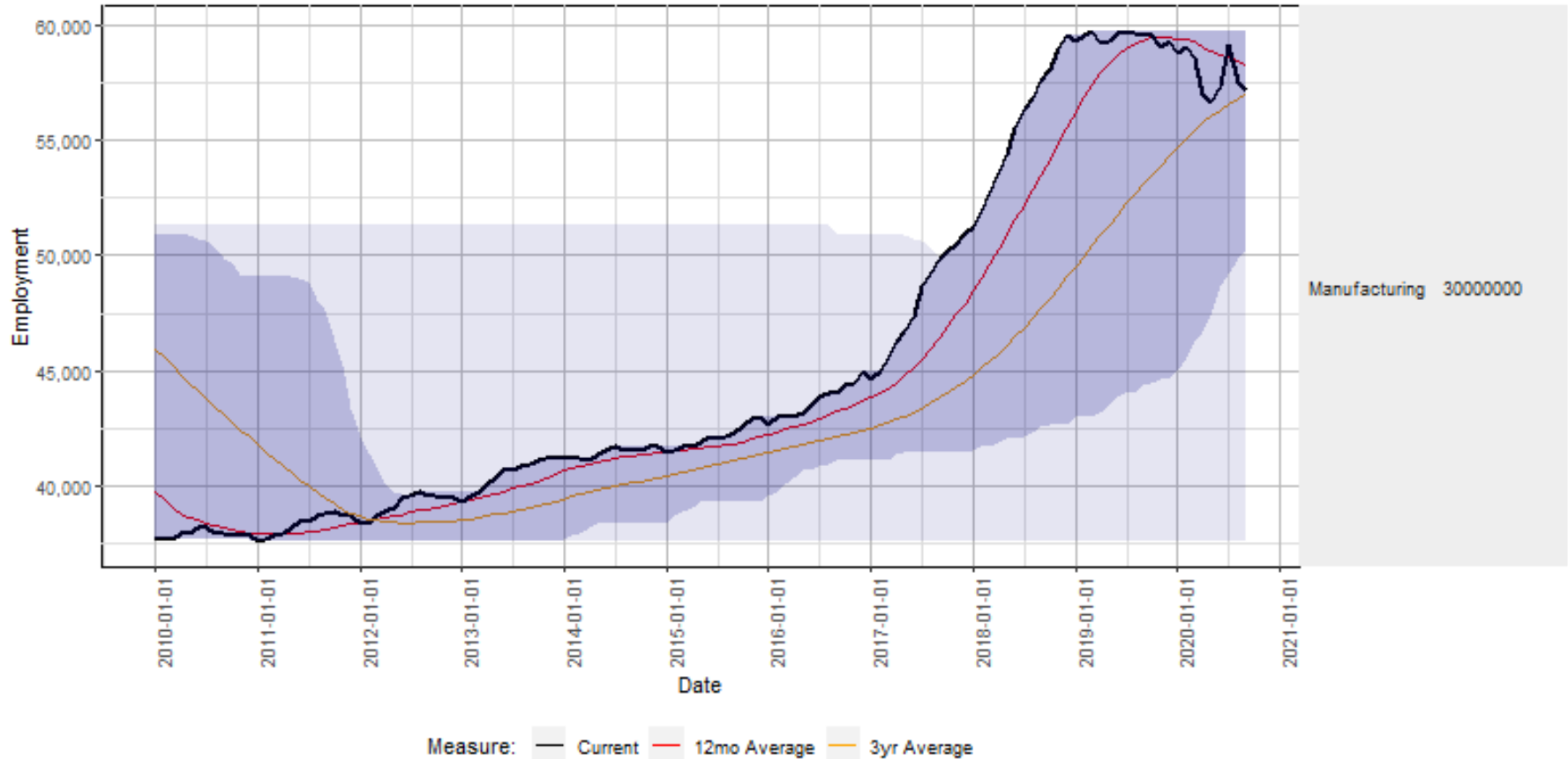
Dark shading indicates 3-year extreme values
Light shading indicates 10-year extreme values
Data series have not been seasonally adjusted



Industry Employment: Manufacturing

Nevada Employment Estimates from CES Program

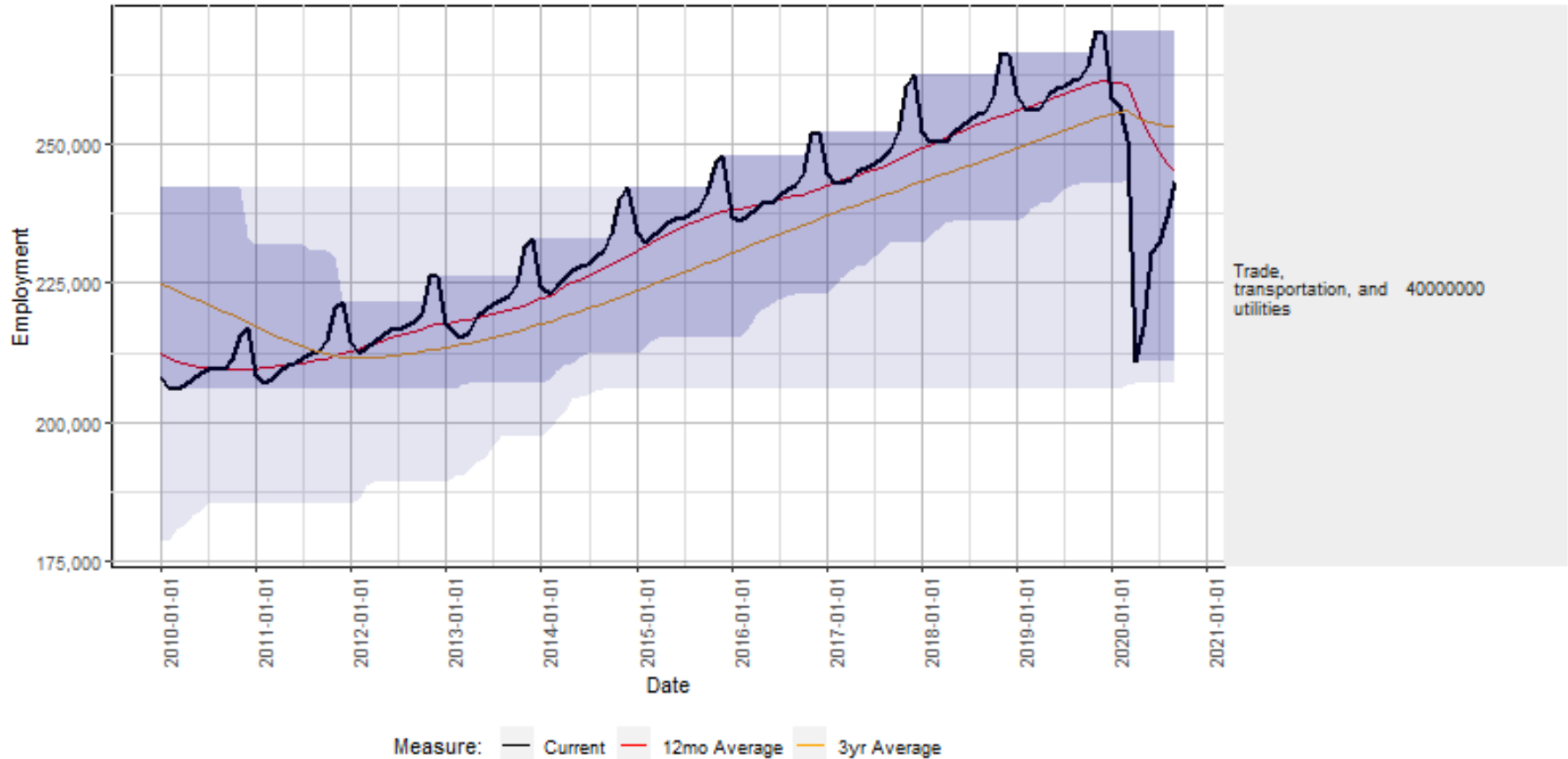
Dark shading Indicates 3-year extreme values,
Light shading Indicates 10-year extreme values
Data series have not been seasonally adjusted



Industry Employment: TTU

Nevada Employment Estimates from CES Program

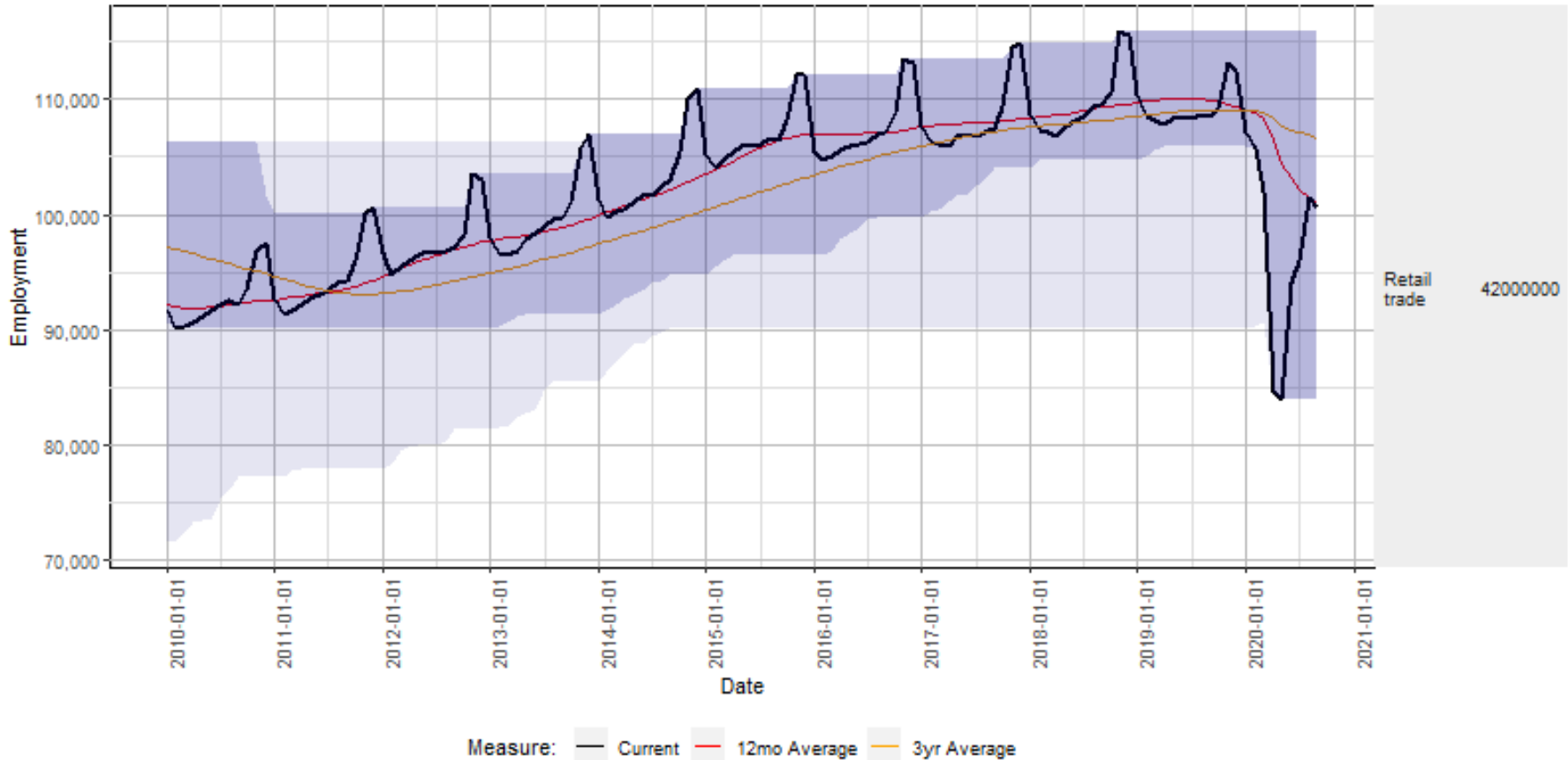
Dark shading indicates 3-year extreme values,
Light shading indicates 10-year extreme values
Data series have not been seasonally adjusted



Industry Employment: Retail Trade – Vegas

Las Vegas Employment Estimates from CES Program

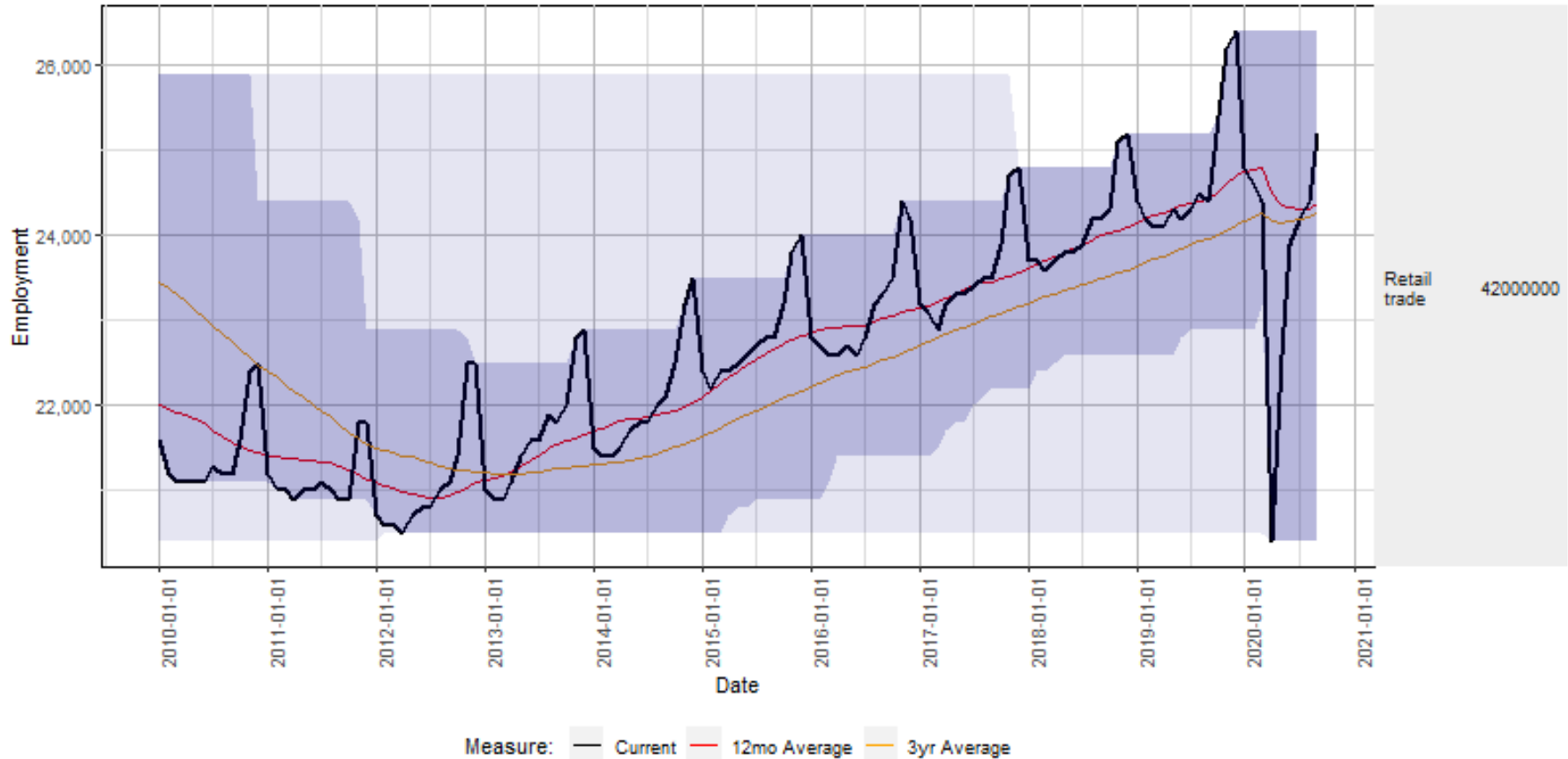
Dark shading indicates 3-year extreme values,
 Light shading indicates 10-year extreme values
 Data series have not been seasonally adjusted



Industry Employment: Retail Trade - Reno

Reno Employment Estimates from CES Program

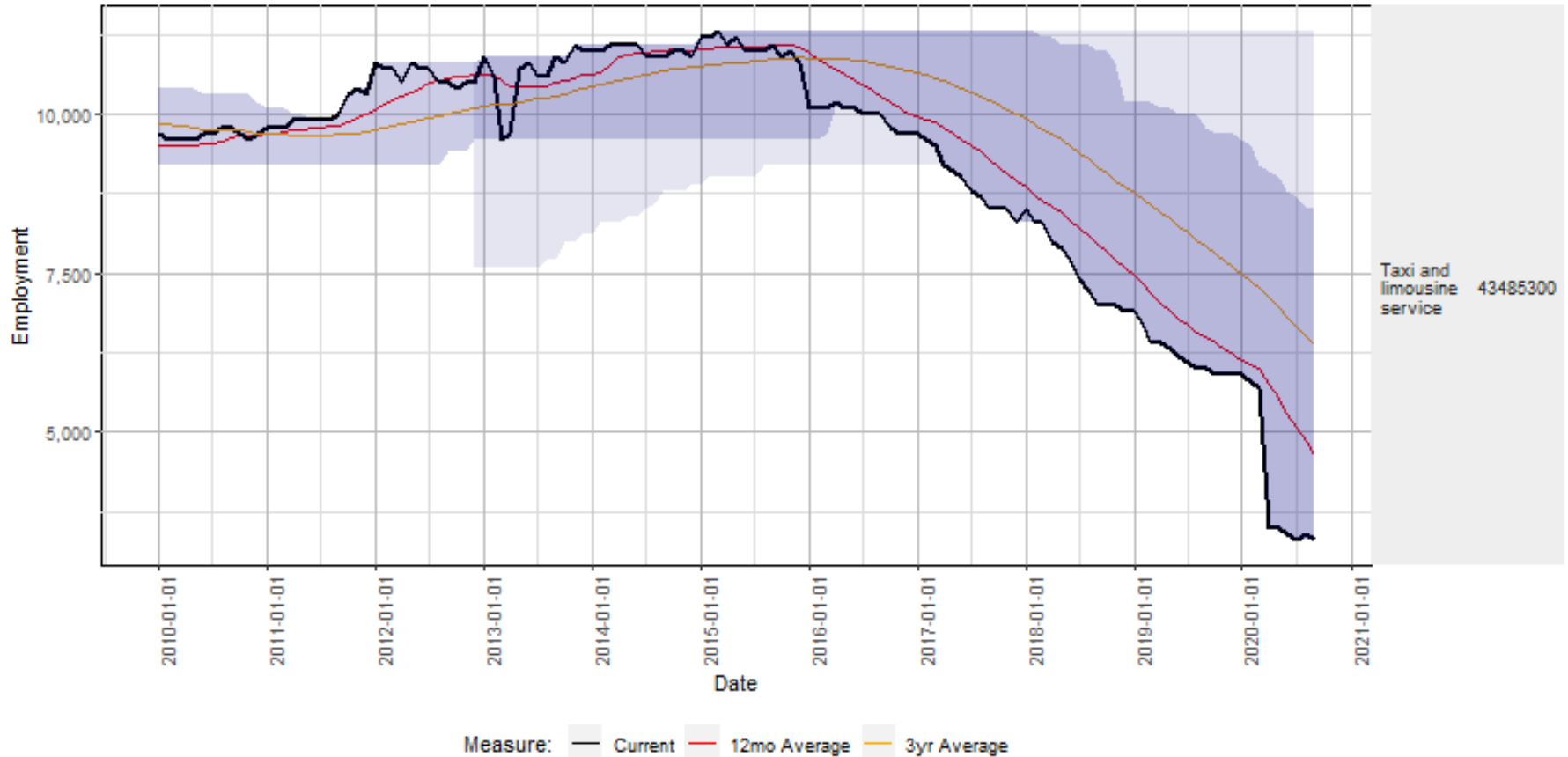
Dark shading indicates 3-year extreme values,
Light shading indicates 10-year extreme values
Data series have not been seasonally adjusted



Industry Employment: Taxi & Limo Svc

Nevada Employment Estimates from CES Program

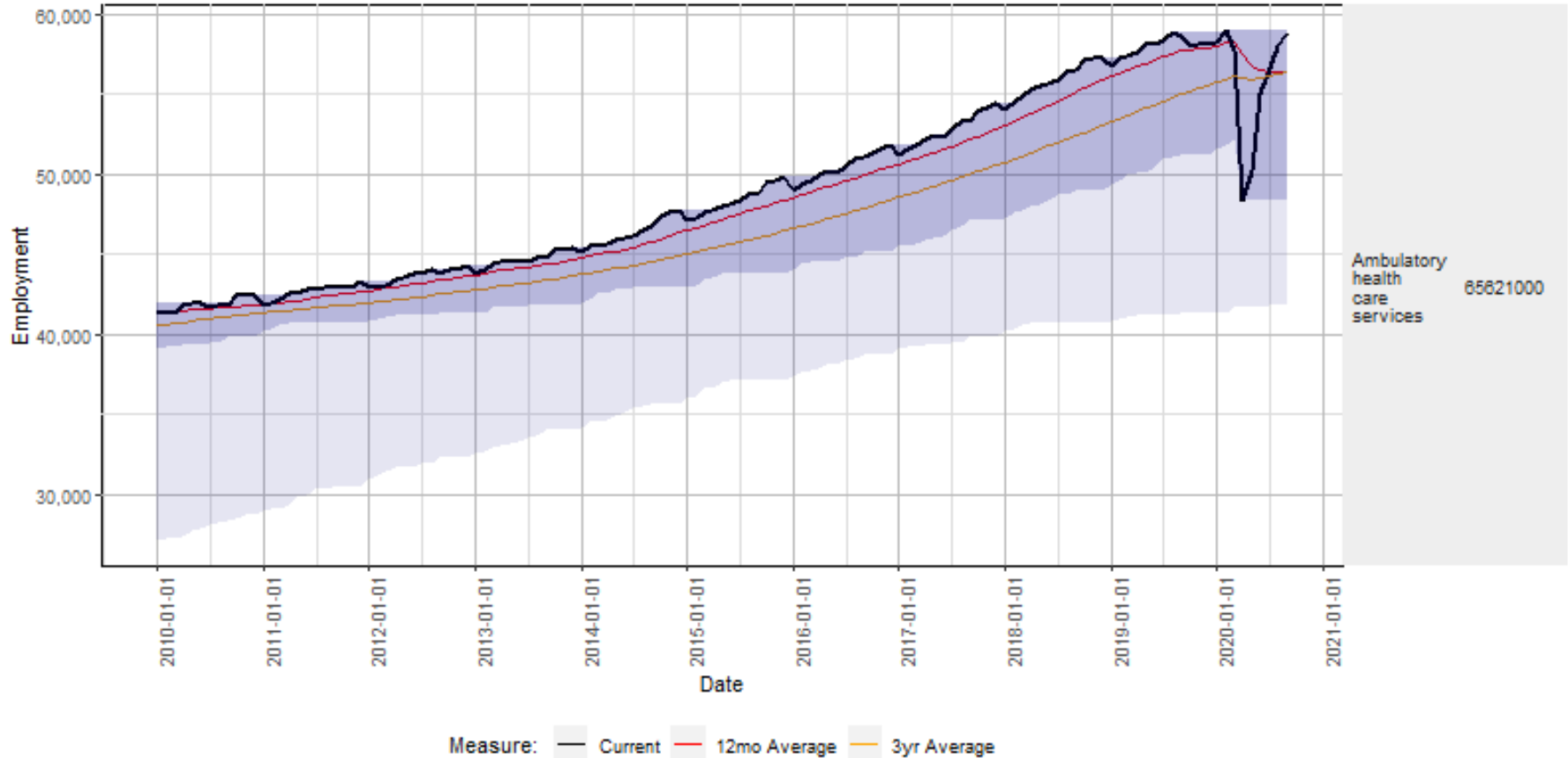
Dark shading indicates 3-year extreme values,
Light shading indicates 10-year extreme values
Data series have not been seasonally adjusted



Industry Employment: Ambulatory Health Care

Nevada Employment Estimates from CES Program

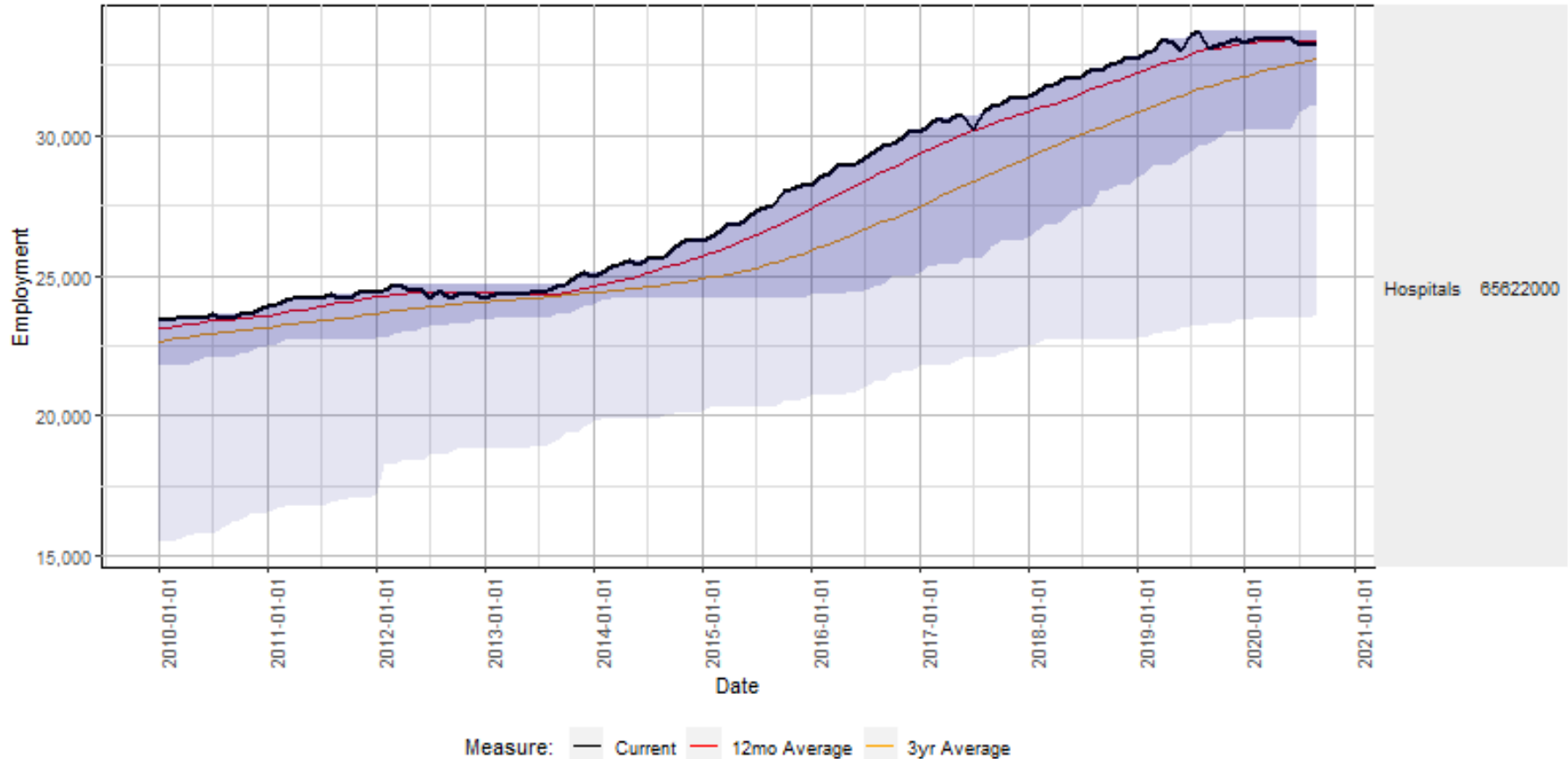
Dark shading indicates 3-year extreme values,
Light shading indicates 10-year extreme values
Data series have not been seasonally adjusted



Industry Employment: Hospitals

Nevada Employment Estimates from CES Program

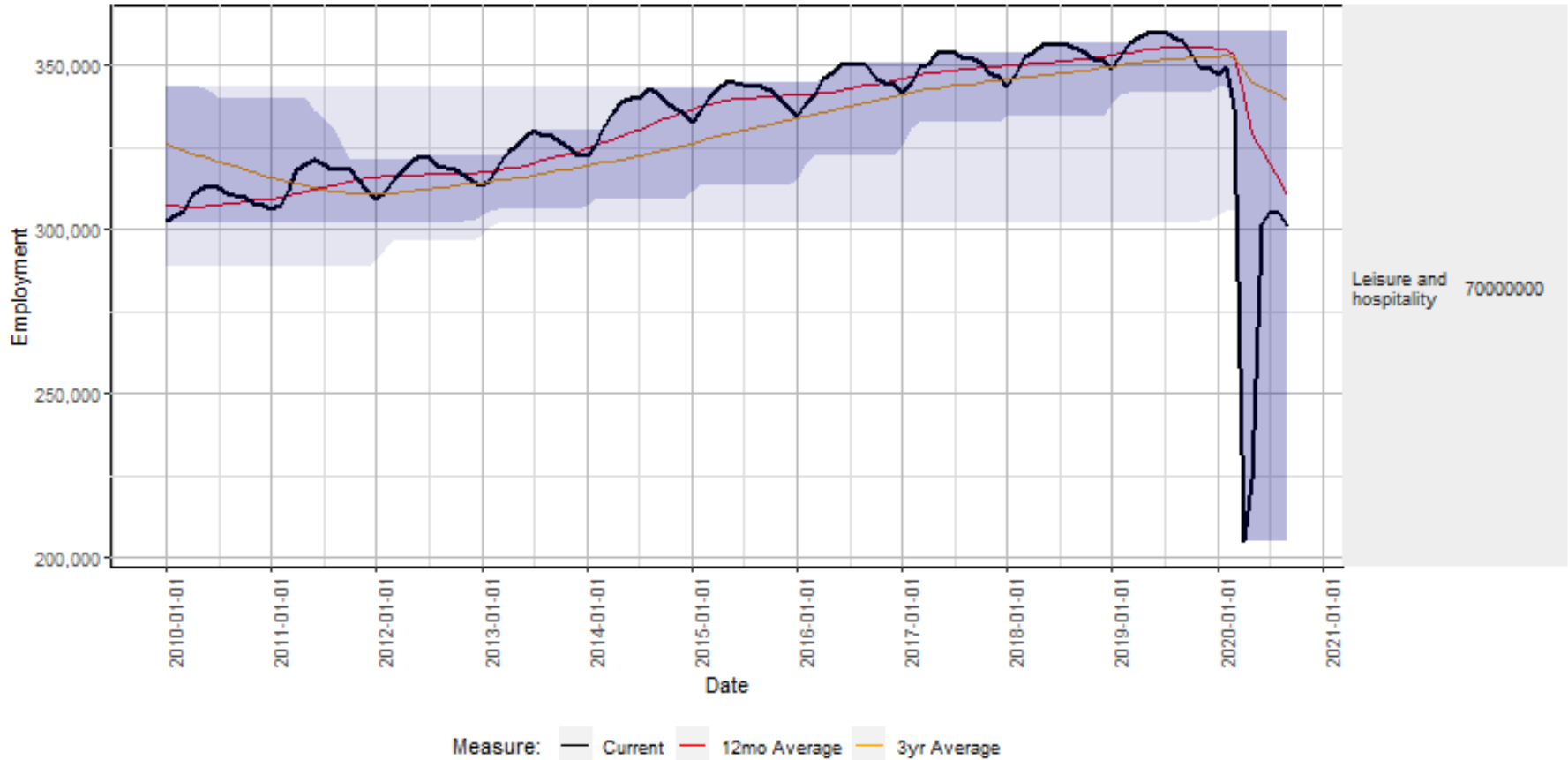
Dark shading indicates 3-year extreme values,
Light shading indicates 10-year extreme values
Data series have not been seasonally adjusted



Industry Employment: Leisure & Hospitality

Nevada Employment Estimates from CES Program

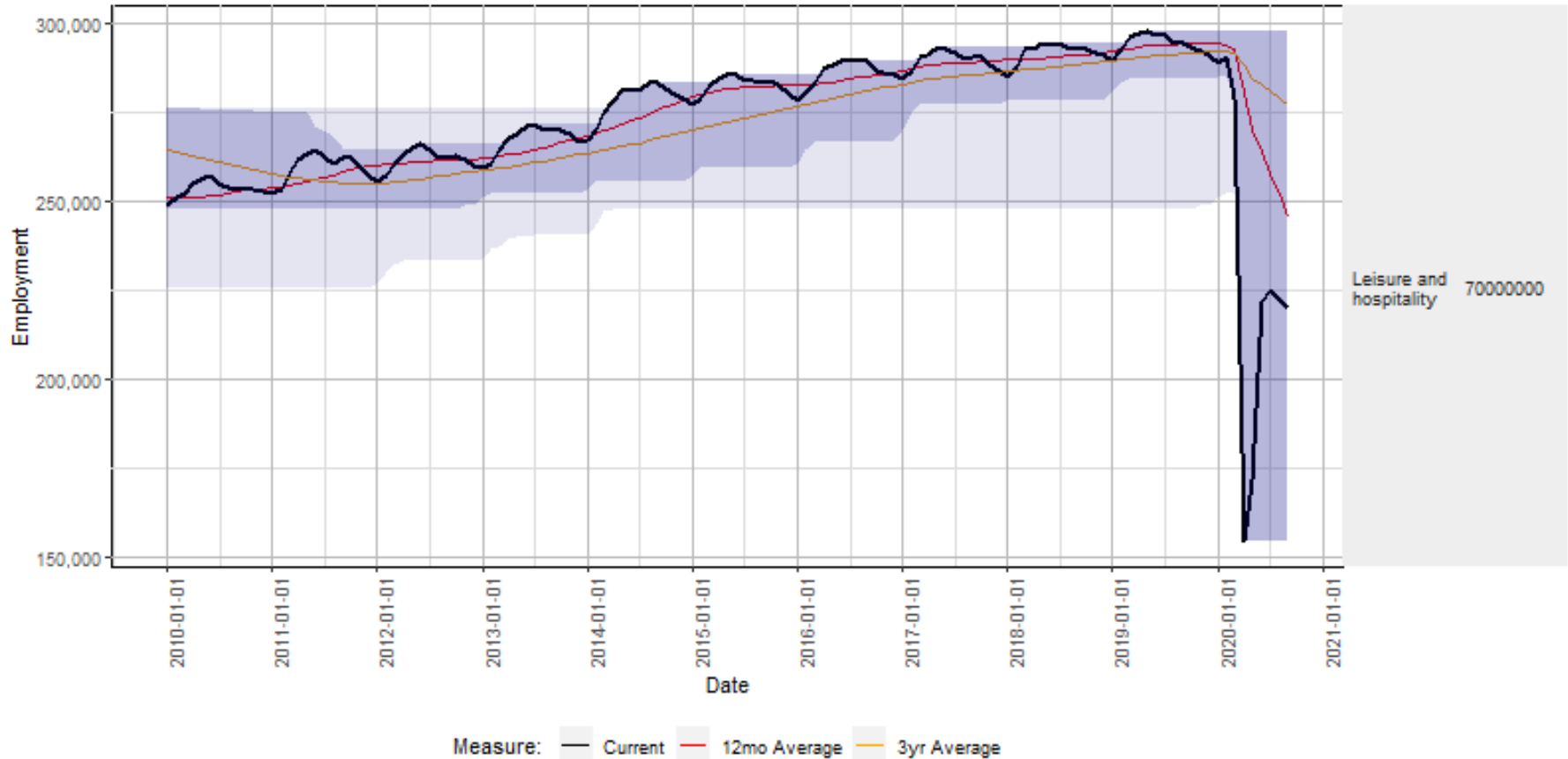
Dark shading indicates 3-year extreme values,
Light shading indicates 10-year extreme values
Data series have not been seasonally adjusted



Industry Employment: L&H – Las Vegas

Las Vegas Employment Estimates from CES Program

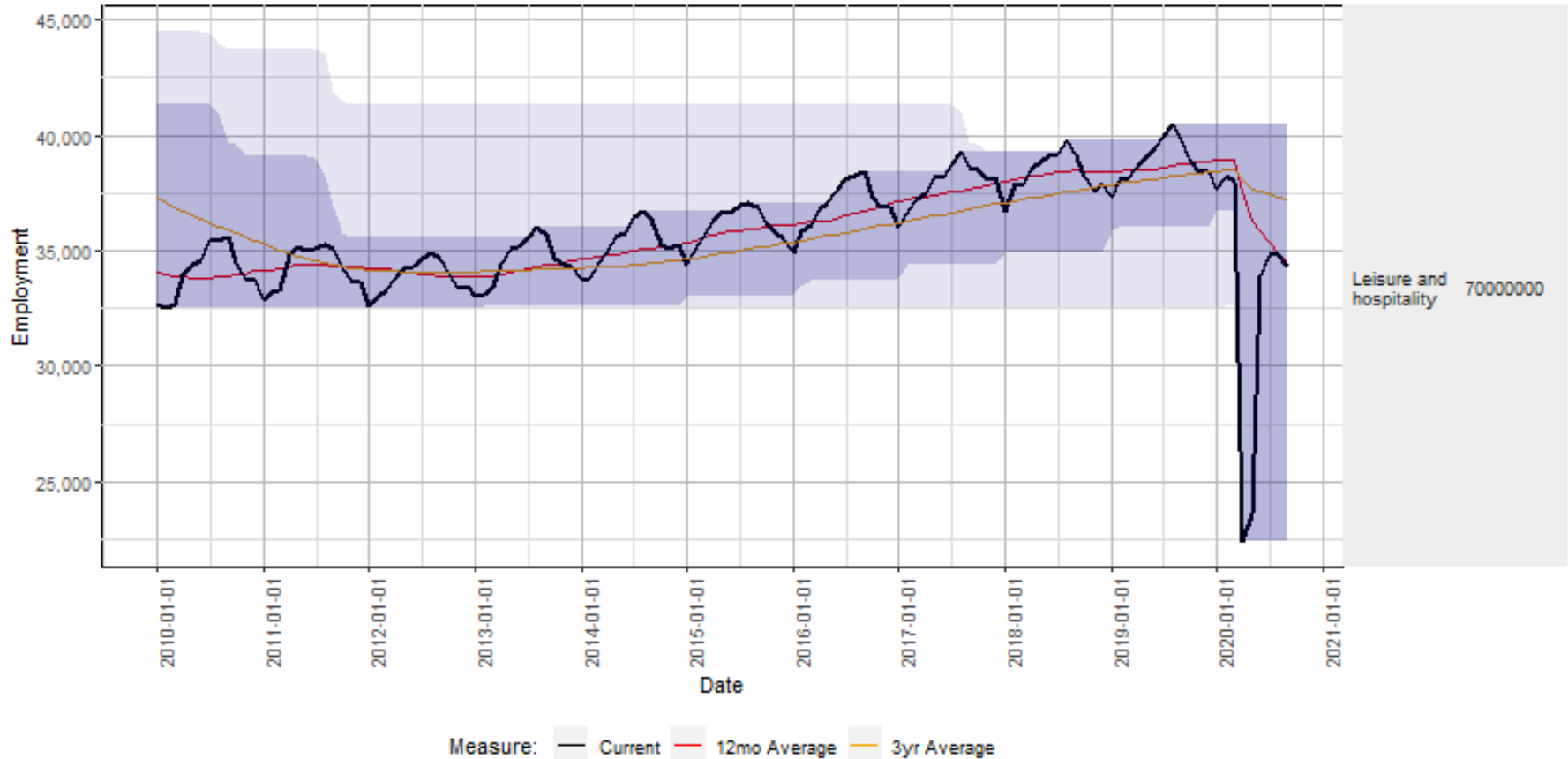
Dark shading indicates 3-year extreme values,
 Light shading indicates 10-year extreme values
 Data series have not been seasonally adjusted



Industry Employment: L&H - Reno

Reno Employment Estimates from CES Program

Dark shading indicates 3-year extreme values,
 Light shading indicates 10-year extreme values
 Data series have not been seasonally adjusted

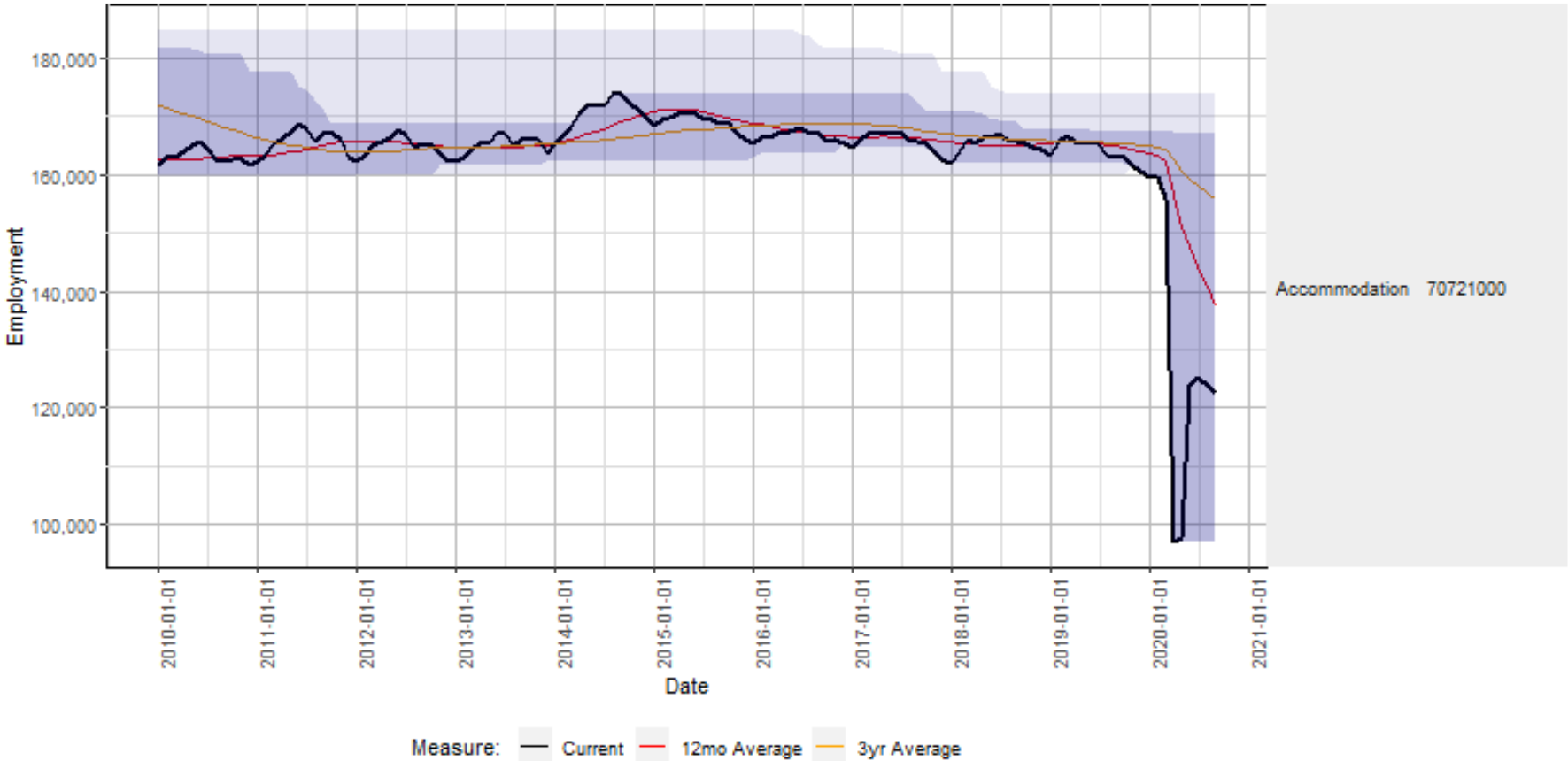


Leisure and
 hospitality 70000000

Industry Employment: Accommodation - LV

Las Vegas Employment Estimates from CES Program

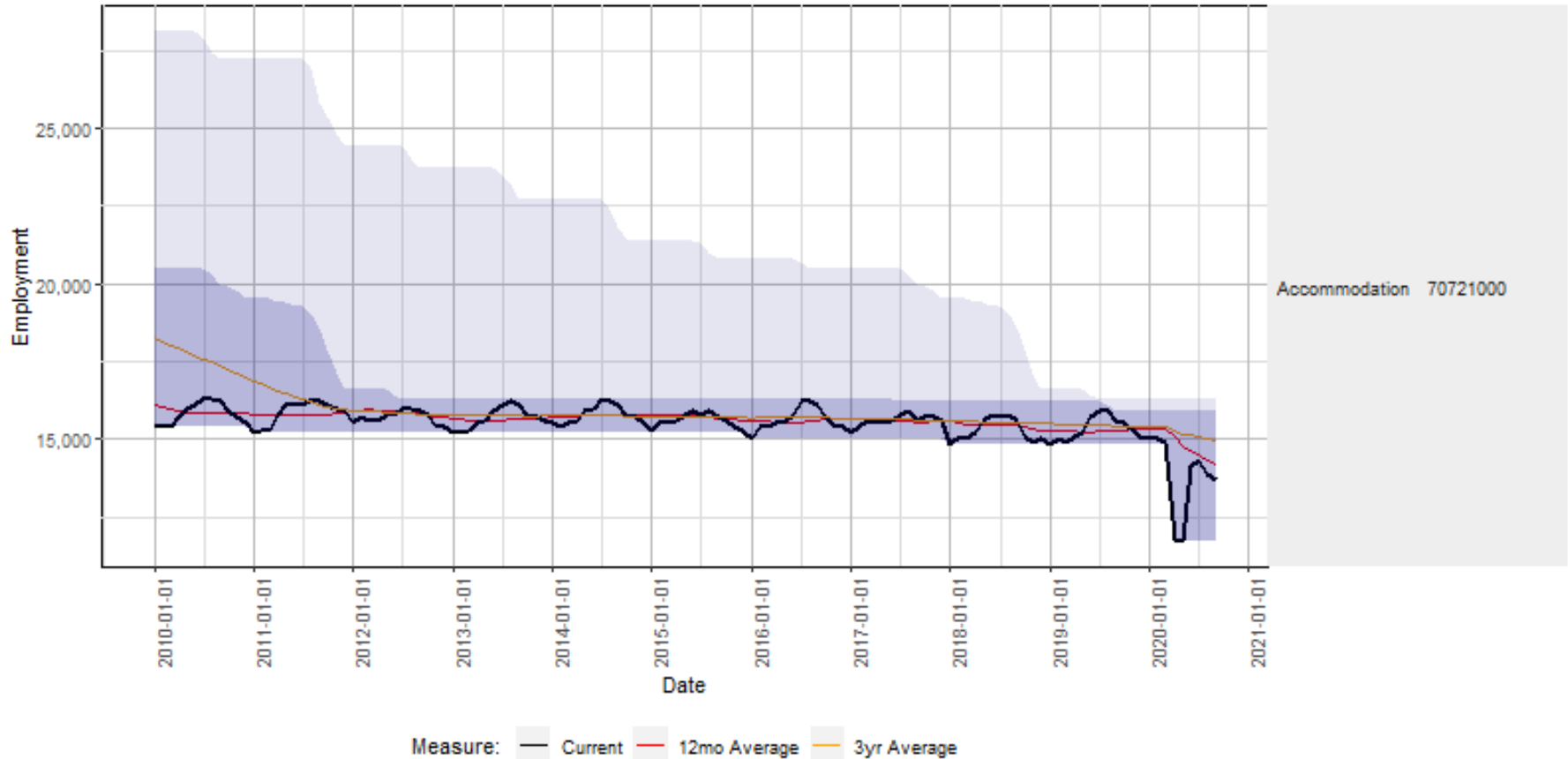
Dark shading indicates 3-year extreme values,
Light shading indicates 10-year extreme values
Data series have not been seasonally adjusted



Industry Employment: Accommodation - Reno

Reno Employment Estimates from CES Program

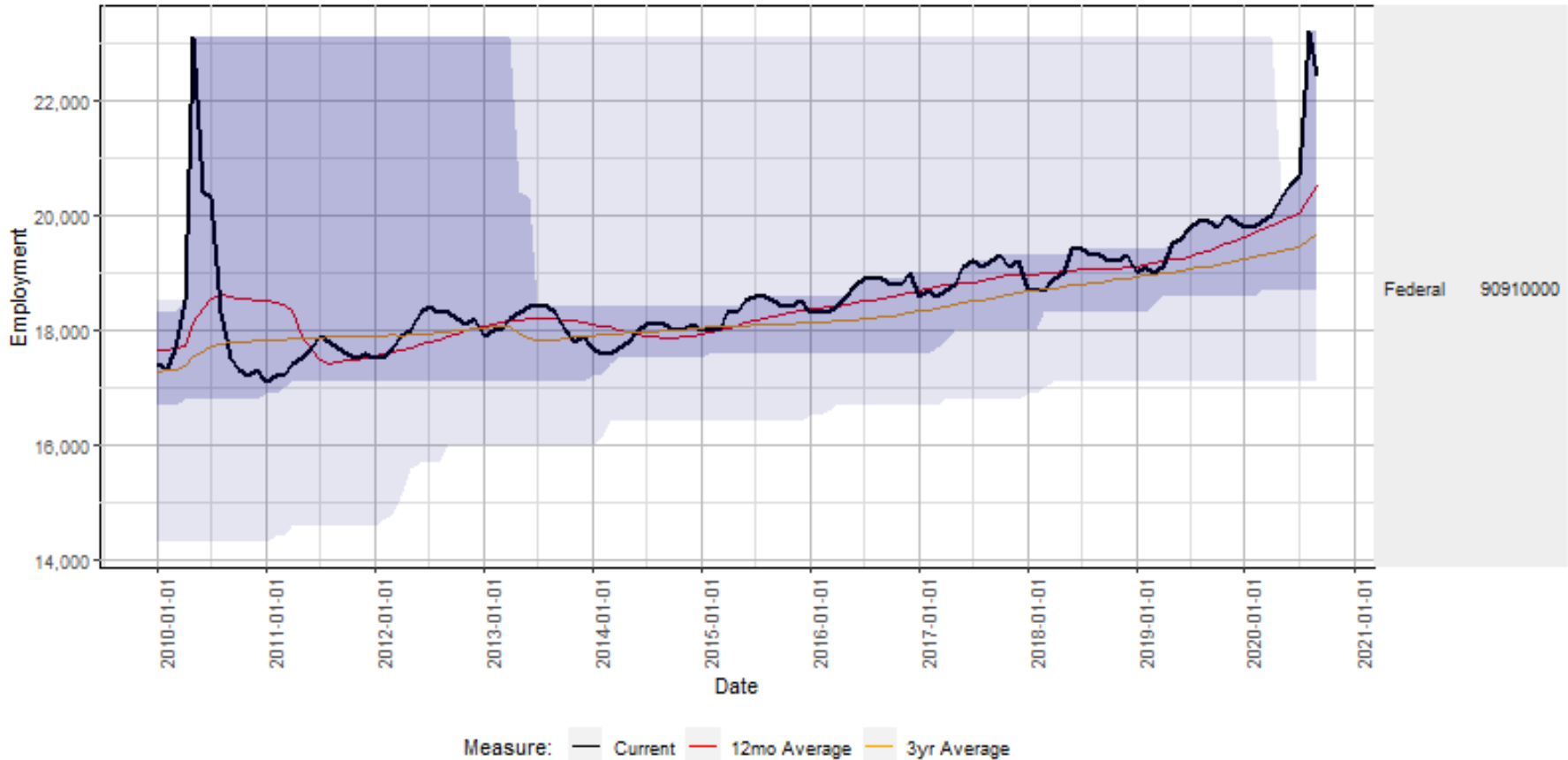
Dark shading indicates 3-year extreme values,
Light shading indicates 10-year extreme values
Data series have not been seasonally adjusted



Industry Employment: Federal Government

Nevada Employment Estimates from CES Program

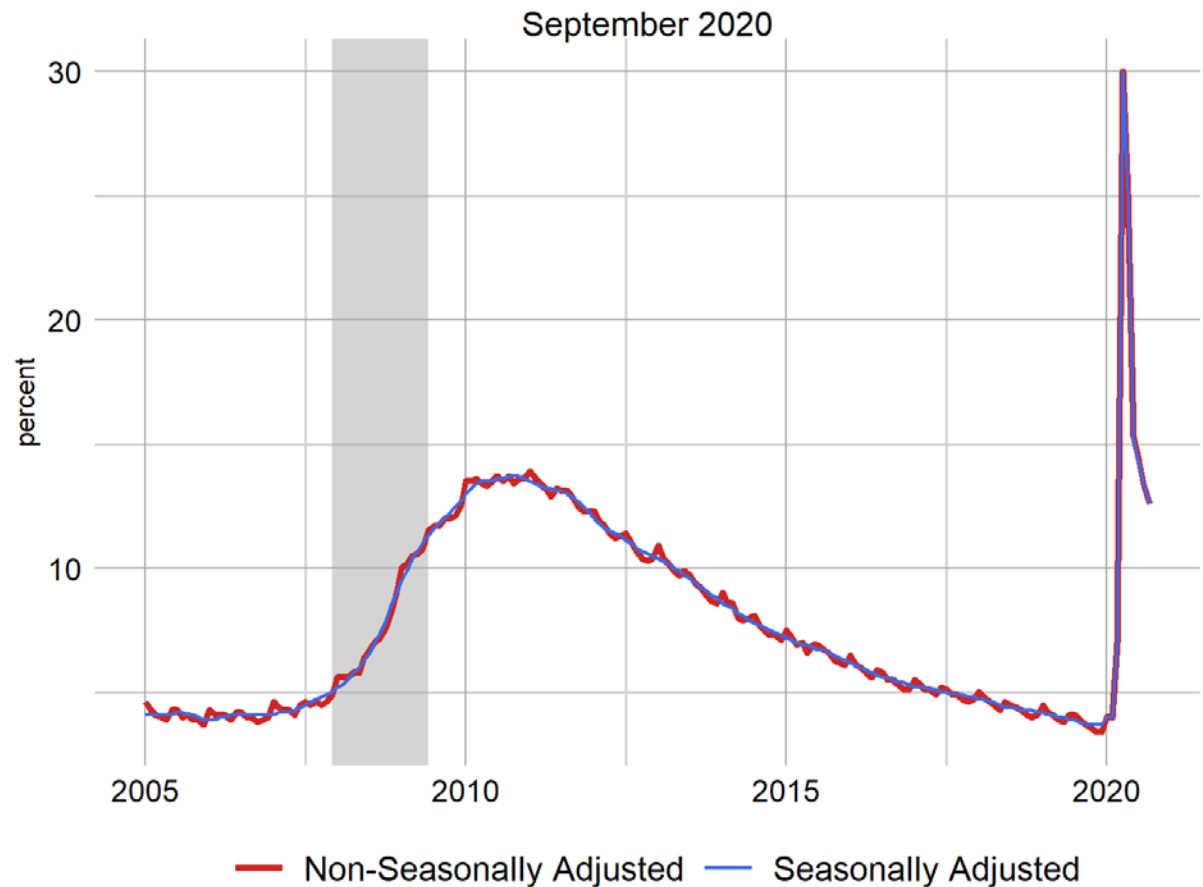
Dark shading indicates 3-year extreme values,
Light shading indicates 10-year extreme values
Data series have not been seasonally adjusted



Unemployment

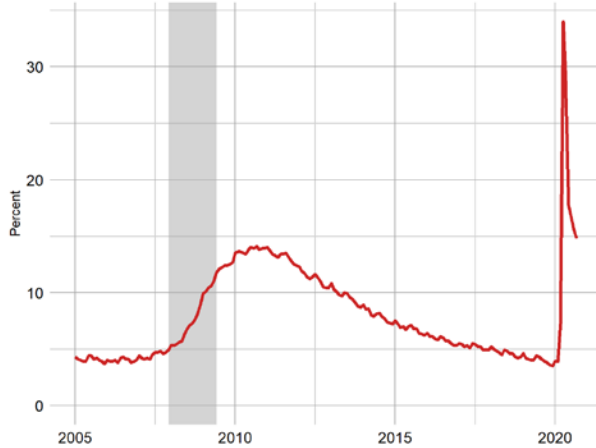
Nevada's unemployment rate rose sharply in April following the closure of nonessential businesses, then rapidly fell as businesses were allowed to reopen.

Pace of declines is slowing as state transitions to a more typical recovery.



Unemployment

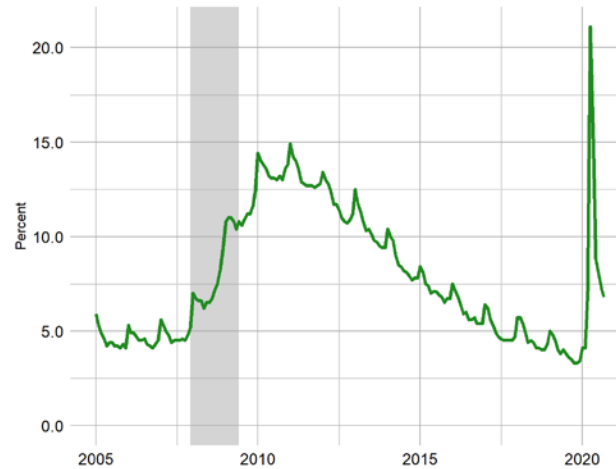
Las Vegas Unemployment Rate



Reno Unemployment Rate



Carson Unemployment Rate



Unemployment

Non-Adjusted Unemployment Rates LAUS

	September 2020	August 2020	Monthly Change	September 2019	Yearly Change
Nevada	12.6	13.3	-0.7	3.7	8.9
Metropolitan Statistical Areas					
Carson City MSA	6.8	7.3	-0.5	3.5	3.3
Las Vegas - Paradise MSA	14.8	15.6	-0.8	3.9	10.9
Reno - Sparks MSA	6.7	7.3	-0.6	3.0	3.7
Combined Statistical Areas					
Reno-Carson City-Fernley, Nv Combined Statistical Area	6.7	7.4	-0.7	3.1	3.6
Counties					
Churchill County	4.7	5.3	-0.6	3.1	1.6
Clark County	14.8	15.6	-0.8	3.9	10.9
Douglas County	6.8	7.5	-0.7	3.4	3.4
Elko County	4.3	4.7	-0.4	2.6	1.7
Esmeralda County	4.6	4.3	0.3	3.8	0.8
Eureka County	3.1	3.9	-0.8	2.4	0.7
Humboldt County	4.4	4.9	-0.5	2.7	1.7
Lander County	4.1	4.3	-0.2	2.9	1.2
Lincoln County	4.5	5.0	-0.5	3.4	1.1
Lyon County	7.3	8.0	-0.7	4.3	3.0
Mineral County	5.4	5.9	-0.5	3.6	1.8
Nye County	8.9	9.7	-0.8	4.9	4.0
Pershing County	4.4	4.9	-0.5	3.5	0.9
Storey County	7.4	7.8	-0.4	3.2	4.2
Washoe County	6.7	7.3	-0.6	3.0	3.7
White Pine County	3.8	4.2	-0.4	2.5	1.3
Carson City	6.8	7.3	-0.5	3.5	3.3

Unemployment

Las Vegas LAUS Summary

Unemployment Rate

Unemployment Rate	14.8
Previous Month	15.6
Previous Year	3.9
Maximum Rate	34

Unemployed Individuals

Unemployment Level	165,647
Monthly Change	-6,194
Annual Change	121,041
Maximum Level	359,352

Reno LAUS Summary

Unemployment Rate

Unemployment Rate	6.7
Previous Month	7.3
Previous Year	3
Maximum Rate	20.4

Unemployed Individuals

Unemployment Level	16,833
Monthly Change	-1,170
Annual Change	9,086
Maximum Level	45,669

Carson City LAUS Summary

Unemployment Rate

Unemployment Rate	6.8
Previous Month	7.3
Previous Year	3.5
Maximum Rate	21.1

Unemployed Individuals

Unemployment Level	1,798
Monthly Change	-73
Annual Change	865
Maximum Level	4,982

Northern Cities LAUS Last 13 Months (Estimates in Thousands)

	Sep-19	Oct-19	Nov-19	Dec-19	Jan-20	Feb-20	Mar-20	Apr-20	May-20	Jun-20	Jul-20	Aug-20	Sep-20	12m Avg.
Fernley City - Non-Seasonally Adjusted														
LABOR FORCE	8.7	8.7	8.7	8.6	8.7	8.8	8.9	8.3	8.0	8.3	8.3	8.3	8.6	8.5
EMPLOYMENT	8.3	8.4	8.3	8.3	8.3	8.3	8.2	6.7	6.8	7.6	7.5	7.6	8.0	7.8
UNEMPLOYMENT	0.4	0.3	0.3	0.4	0.4	0.4	0.8	1.7	1.2	0.7	0.7	0.7	0.7	0.7
UNEMPLOYMENT RATE	4.2%	3.9%	4.0%	4.3%	4.9%	4.9%	8.4%	20.0%	14.7%	9.0%	8.8%	8.5%	7.6%	8.3%
Elko - Non-Seasonally Adjusted														
LABOR FORCE	10.6	10.7	10.5	10.4	10.6	10.6	10.7	10.2	10.0	10.0	9.9	10.0	10.4	10.3
EMPLOYMENT	10.3	10.4	10.2	10.1	10.2	10.2	10.1	9.0	9.2	9.5	9.4	9.5	9.9	9.8
UNEMPLOYMENT	0.3	0.3	0.3	0.3	0.4	0.4	0.6	1.2	0.9	0.5	0.5	0.5	0.5	0.5
UNEMPLOYMENT RATE	2.5%	2.6%	2.6%	2.6%	3.4%	3.3%	5.5%	11.6%	8.6%	5.0%	4.9%	4.8%	4.5%	5.0%
Reno - Non-Seasonally Adjusted														
LABOR FORCE	139.2	139.7	140.3	140.0	139.3	141.1	139.7	120.5	119.7	132.1	131.8	132.3	135.4	134.3
EMPLOYMENT	135.1	135.8	136.5	136.2	134.6	136.6	132.1	95.3	99.5	120.0	120.5	122.2	126.0	124.6
UNEMPLOYMENT	4.1	3.9	3.8	3.8	4.7	4.5	7.6	25.2	20.2	12.0	11.3	10.1	9.4	9.7
UNEMPLOYMENT RATE	3.0%	2.8%	2.7%	2.7%	3.4%	3.2%	5.5%	20.9%	16.9%	9.1%	8.5%	7.6%	6.9%	7.5%
Sparks - Non-Seasonally Adjusted														
LABOR FORCE	57.9	58.1	58.4	58.2	57.9	58.7	58.2	50.2	49.5	54.7	54.6	54.9	56.2	55.8
EMPLOYMENT	56.2	56.5	56.8	56.7	56.0	56.9	55.0	39.6	41.4	50.0	50.1	50.9	52.5	51.9
UNEMPLOYMENT	1.7	1.6	1.6	1.6	1.9	1.8	3.2	10.5	8.1	4.8	4.5	4.0	3.8	3.9
UNEMPLOYMENT RATE	2.9%	2.8%	2.7%	2.7%	3.2%	3.1%	5.5%	21.0%	16.3%	8.7%	8.2%	7.4%	6.8%	7.4%

Note: Unemployment rates are based on unrounded data.

Employment adjusted by census relationships to reflect number of persons by place of residence.

Information compiled by DETR's Research & Analysis Bureau

Southern Cities LAUS Last 13 Months (Estimates in Thousands)

	Sep-19	Oct-19	Nov-19	Dec-19	Jan-20	Feb-20	Mar-20	Apr-20	May-20	Jun-20	Jul-20	Aug-20	Sep-20	12m Avg.
Boulder City - Non-Seasonally Adjusted														
LABOR FORCE	7.6	7.6	7.6	7.6	7.7	7.7	7.6	6.2	6.0	6.9	6.9	7.0	7.1	7.2
EMPLOYMENT	7.3	7.3	7.4	7.3	7.4	7.4	7.1	4.7	4.9	6.1	6.2	6.2	6.4	6.5
UNEMPLOYMENT	0.3	0.3	0.3	0.3	0.3	0.3	0.5	1.6	1.2	0.8	0.8	0.7	0.7	0.6
UNEMPLOYMENT RATE	3.9%	3.6%	3.4%	3.5%	3.9%	3.7%	6.7%	25.0%	19.3%	11.6%	11.0%	10.5%	9.7%	9.3%
Henderson - Non-Seasonally Adjusted														
LABOR FORCE	164.3	164.4	164.4	164.0	165.3	166.6	164.5	143.1	138.1	154.7	154.7	154.9	157.4	157.7
EMPLOYMENT	158.3	158.7	159.1	158.8	159.4	160.6	153.7	100.8	105.0	132.1	133.3	134.9	138.0	141.2
UNEMPLOYMENT	6.0	5.7	5.4	5.2	5.9	6.0	10.8	42.3	33.1	22.6	21.4	20.0	19.3	16.5
UNEMPLOYMENT RATE	3.7%	3.5%	3.3%	3.2%	3.6%	3.6%	6.5%	29.5%	23.9%	14.6%	13.8%	12.9%	12.3%	10.9%
Las Vegas - Non-Seasonally Adjusted														
LABOR FORCE	316.9	317.2	317.2	316.2	319.1	321.2	318.4	285.3	276.7	304.7	304.1	304.4	308.6	307.8
EMPLOYMENT	304.1	304.8	305.6	305.0	306.3	308.6	295.3	193.7	201.7	253.8	256.2	259.1	265.2	271.3
UNEMPLOYMENT	12.8	12.4	11.6	11.2	12.8	12.6	23.1	91.6	74.9	50.9	47.9	45.3	43.4	36.5
UNEMPLOYMENT RATE	4.0%	3.9%	3.7%	3.5%	4.0%	3.9%	7.3%	32.1%	27.1%	16.7%	15.8%	14.9%	14.1%	12.2%
Mesquite - Non-Seasonally Adjusted														
LABOR FORCE	8.0	8.0	8.0	8.0	8.1	8.1	7.9	6.8	6.8	7.0	7.1	7.1	7.2	7.5
EMPLOYMENT	7.7	7.7	7.8	7.7	7.8	7.8	7.5	4.9	5.1	6.4	6.5	6.6	6.7	6.9
UNEMPLOYMENT	0.3	0.2	0.2	0.2	0.3	0.2	0.4	1.9	1.6	0.6	0.6	0.5	0.5	0.6
UNEMPLOYMENT RATE	3.4%	3.1%	2.9%	2.9%	3.4%	3.1%	4.6%	27.7%	24.2%	8.6%	8.0%	7.4%	7.1%	8.6%
North Las Vegas - Non-Seasonally Adjusted														
LABOR FORCE	115.7	115.8	115.9	115.5	116.7	117.4	117.0	105.1	102.8	112.4	111.9	111.8	113.4	113.0
EMPLOYMENT	110.8	111.1	111.3	111.1	111.6	112.4	107.6	70.6	73.5	92.5	93.3	94.4	96.6	98.8
UNEMPLOYMENT	4.9	4.7	4.6	4.4	5.1	5.0	9.4	34.6	29.3	20.0	18.5	17.4	16.8	14.2
UNEMPLOYMENT RATE	4.3%	4.1%	4.0%	3.8%	4.4%	4.3%	8.0%	32.9%	28.5%	17.7%	16.6%	15.5%	14.8%	12.9%

Note: Unemployment rates are based on unrounded data.

Employment adjusted by census relationships to reflect number of persons by place of residence.

Information compiled by DETR's Research & Analysis Bureau

Unemployment Claims

August 2020 Unemployment Insurance Activity

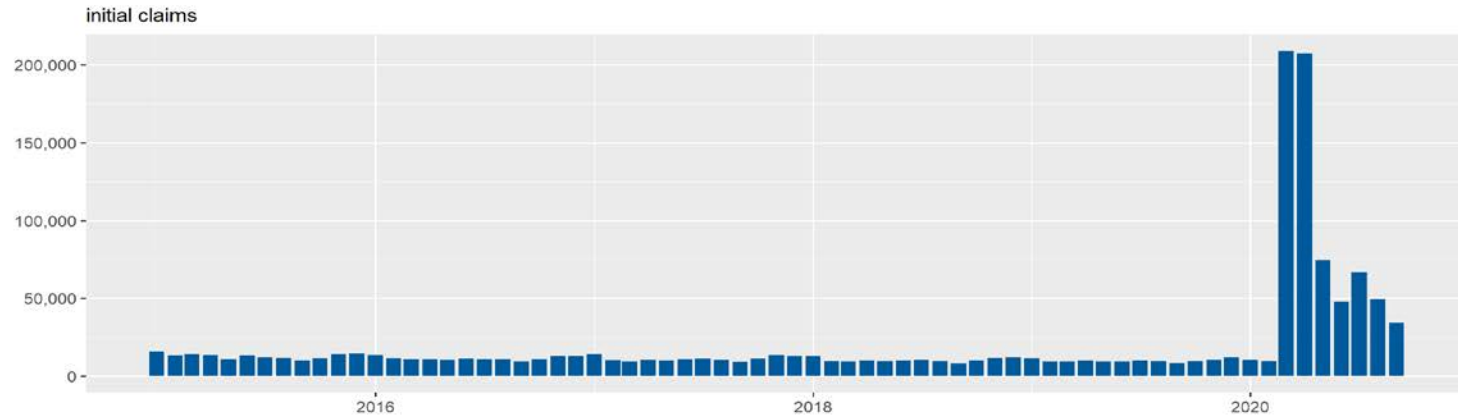
Measure	September 2020	September 2019	% change	August 2020	% change	12 month average
Initial Claims	34,370	8,441	307.18%	49,595	-30.70%	61,797
Weeks Claimed	735,190	72,817	909.64%	1,169,210	-37.12%	629,067
Weeks Compensated	695,950	64,873	972.79%	1,226,794	-43.27%	603,093
Amount Compensated	\$235,126,234	\$22,859,428	928.57%	\$386,956,759	-39.24%	\$205,198,495
Weeks Compensated Total Unemployment	599,838	58,762	920.79%	1,085,424	-44.74%	544,362
Amount Compensated Total Unemployment	\$25,053,592	\$21,468,217	16.70%	\$361,634,679	-93.07%	\$177,699,892
First Payments	12,491	3,808	228.02%	21,480	-41.85%	36,930
Final Payments (Exhaustions)	54,520	1,731	3,049.62%	19,583	178.40%	8,869
Average Weekly Benefit	\$41.77	\$365.34	-88.57%	\$333.17	-87.46%	\$337.75
Average Duration (in weeks)	14.74	13.29	10.91%	13.79	6.89%	11.42
Exhaustion Rate	94.54%	33.82%	179.55%	100.13%	-5.58%	48.23%

Source: ETA 5159

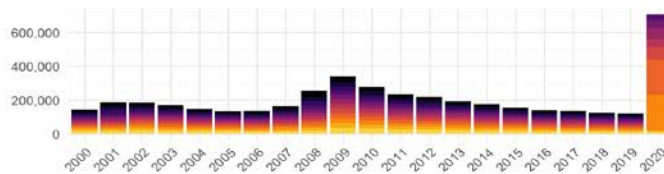
Figure #

Unemployment Claims

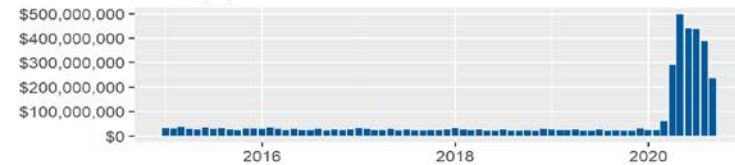
State of Nevada Unemployment Insurance Activity



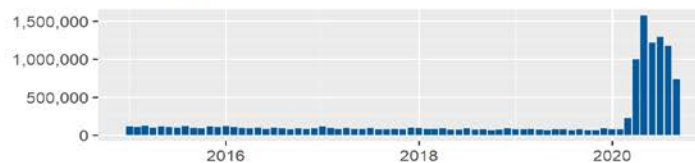
initial claims by year and month



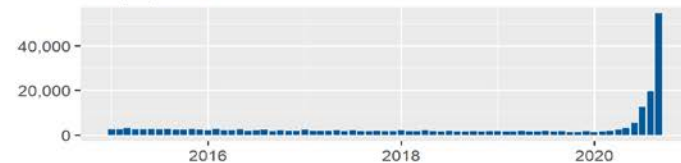
benefit payments



weeks claimed



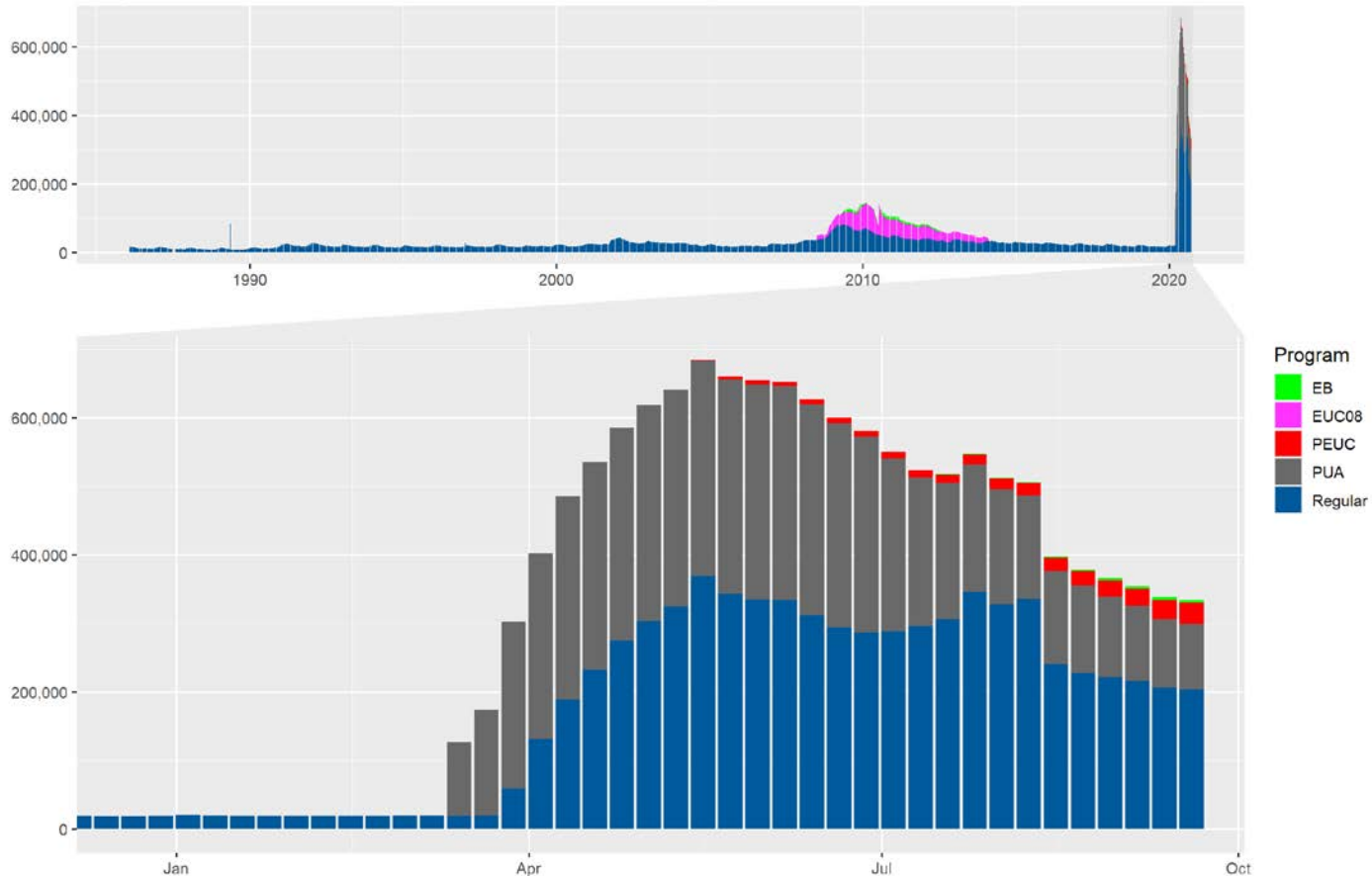
final payments



Source: ETA 5159
Figure #

Unemployment Claims

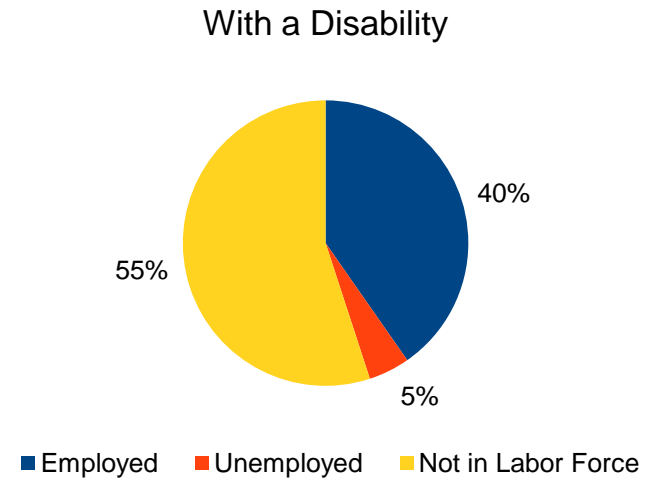
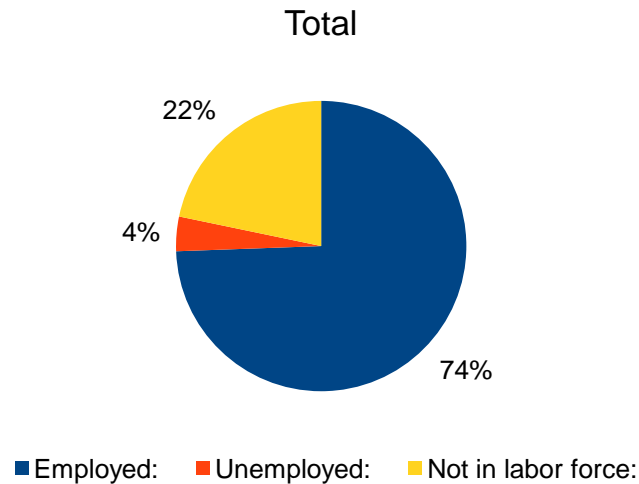
State of Nevada Continued Claims by Program
weekly totals



Source: ETA 539

Employment Status of Persons with a Disability

American Community Survey 2019 1 Year Estimates

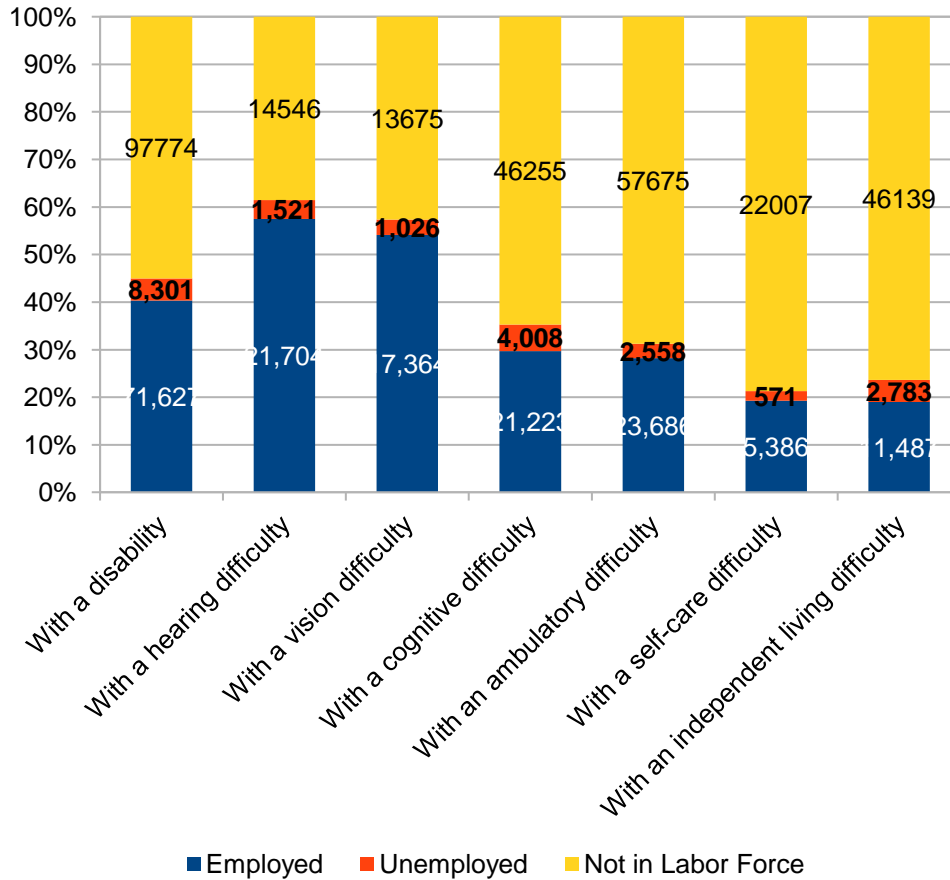


	Total	Percent Of Total	With Disability	Total	Percent Of Total
Employed	1,384,335	74.4%	Employed	71,627	40.3%
Unemployed	71,436	3.8%	Unemployed	8,301	4.7%
Not in labor force	404,211	21.7%	Not in Labor Force	97,774	55.0%

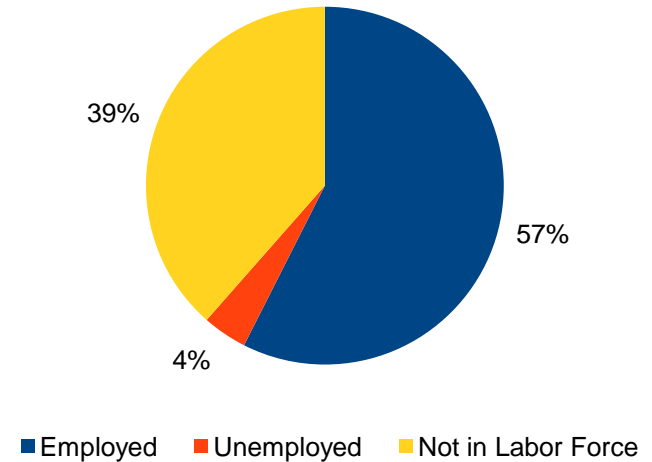
Employment Status of Persons with a Disability

American Community Survey 2019 1 Year Estimates

Labor Force Status- Persons with a Disability



With a Hearing Difficulty



Demographics of Unemployment

		Most Current Data As Of:																				
		2018																				
		Carson City	Churchill County	Clark County	Douglas County	Elko County	Esmeralda County	Eureka County	Humboldt County	Lander County	Lincoln County	Lyon County	Mineral County	Nye County	Pershing County	Storey County	Washoe County	White Pine County	Statewide	Southern Area	Northern Area	
All Unemployed People, Orange Indicates High Unemployment Rate	Population	County Total: Ages 16+	1,661	778	78,346	1,149	1,234	7	0	478	266	212	2,100	301	1,530	152	76	13,415	145	101,850	80,095	21,755
		County Total: Ages 20-64	1,308	690	68,132	920	971	7	0	461	224	164	1,640	285	1,190	133	70	11,043	90	87,328	69,493	17,835
		County Total: Ages 25-64	953	528	57,269	732	848	7	0	347	97	138	1,413	259	1,021	132	39	9,015	90	72,888	58,435	14,453
	Age	16-19	274	59	7,632	121	191	0	0	20	43	49	245	15	154	19	0	1,726	43	10,591	7,835	2,756
		20-24	350	194	11,083	202	119	0	0	110	127	26	229	26	181	1	34	2,113	0	14,795	11,290	3,505
		25-29	118	91	10,643	87	123	4	0	69	7	0	290	72	74	50	0	1,655	12	13,295	10,721	2,574
		30-34	79	49	8,513	184	103	0	0	42	39	0	158	111	276	11	0	1,298	32	10,895	8,789	2,106
		35-44	290	58	14,792	176	211	0	0	103	13	66	317	36	103	25	13	1,971	28	18,202	14,961	3,241
		45-54	177	213	13,780	90	182	0	0	68	37	0	487	20	244	46	22	2,516	16	17,898	14,024	3,874
		55-59	204	64	5,668	117	148	3	0	31	0	34	62	8	195	0	3	899	1	7,437	5,900	1,537
		60-64	75	49	3,668	76	81	0	0	36	0	37	102	12	122	0	0	632	0	4,890	3,827	1,063
		65-74	74	28	2,571	79	63	0	0	0	0	0	171	0	154	0	7	591	12	3,750	2,725	1,025
	75+	12	0	596	9	23	0	0	0	0	0	36	0	21	0	0	91	2	790	617	173	
	Race / Ethnicity (Age 16 or Older)	White, Not Hispanic or Latino	988	556	31,860	822	776	4	0	292	161	213	1,372	173	1,303	87	69	7,540	66	46,282	33,380	12,902
		Black	42	22	13,657	22	0	0	0	0	0	0	77	0	23	0	7	414	0	14,264	13,680	584
		Hispanic	443	30	22,952	258	284	3	0	131	72	0	434	15	130	51	0	3,726	29	28,558	23,085	5,473
		American Indian & Alaska Native	103	101	903	44	129	0	0	57	32	0	108	127	58	14	0	552	38	2,266	961	1,305
		Asian	13	46	6,179	0	0	0	0	0	0	0	34	0	8	0	0	661	12	6,953	6,187	766
		Pacific Islander or Native Hawaiian	0	0	750	0	6	0	0	0	0	0	7	0	0	0	0	83	2	848	750	98
		Some Other Race	255	0	8,837	36	24	0	0	9	50	0	195	0	55	37	0	1,215	0	10,713	8,892	1,821
		Two or More Races	33	25	4,166	4	52	0	0	0	0	0	132	0	12	0	0	801	0	5,225	4,178	1,047

View full report at

<http://nevadaworkforce.com/Publications>

(Direct link to PDF click [here](#).)

For Additional Information, Please Contact:

Nevada Department of Employment, Training and Rehabilitation
Research and Analysis Bureau

David Schmidt
Chief Economist
deschmidt@nvdetr.org

Christopher Robison
Supervising Economist
c-robison@nvdetr.org

(775) 684-0450
<http://www.nevadaworkforce.com>